

## Single Pole Devices and Temporary Power

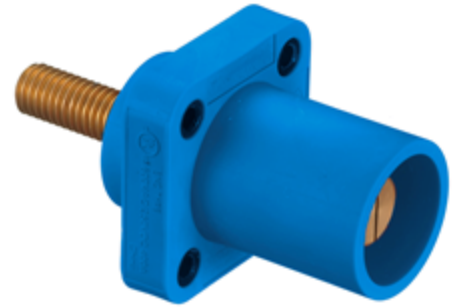
400A, 600V AC/250V DC

## Stud Type Male Receptacles

# HUBBELL

### Ordering Information

| Description  | Device Color | UPC          | Catalog Number |
|--|--------------|--------------|----------------|
| 400 A, Panel Mount, thermoplastic elastomer, mates with 300 and 400A plugs | Blue         | 783585113005 | HBLMRSBL       |

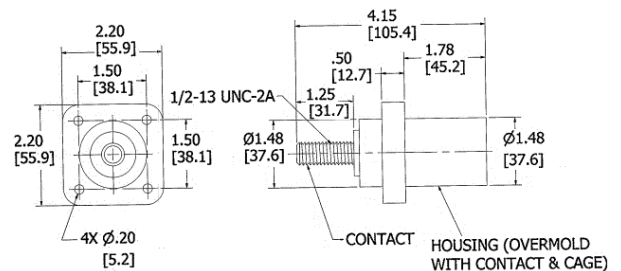


### Standards

UL and cUL Listed  
UL Enclosure Types 3R, 4X, 12  
National Electric Code (NEC), ANSI/NFPA 70

### Specifications

|                          |                             |
|--------------------------|-----------------------------|
| Base Compound            | Thermoplastic Elastomer     |
| Contact Material         | Brass                       |
| Retaining Screw Material | Nylon                       |
| Mounting Hole            | 4x Ø .20"                   |
| Termination              | 1/2-13 UNC-2A Threaded Stud |



### Performance

|                   |                                  |
|-------------------|----------------------------------|
| <b>Electrical</b> |                                  |
| Amperage Rating   | 400A Maximum                     |
| Voltage Ratings   | 600V AC Maximum; 250V DC Maximum |

|                        |  |
|------------------------|--|
| <b>Mechanical</b>      |  |
| Product Identification | Ratings are a permanent part of device |
| Terminal Accommodation | #4 to 4/0 AWG                          |

|                      |                               |
|----------------------|-------------------------------|
| <b>Environmental</b> |                               |
| Flammability         | HB per UL94 or CSA 22.2. 0.17 |

### Online Resources

Customer Use Drawing  
eCatalog  
Installation Instructions

Distributor:



Phone: 407-857-8770

Fax: 407-857-8771

Email: [sales@techni-lux.com](mailto:sales@techni-lux.com)

[www.techni-lux.com](http://www.techni-lux.com)

Dimensions in Inches (mm)

Hubbell Wiring Device-Kellems • Hubbell Incorporated (Delaware) • 40 Waterview Drive • Shelton, CT 06484

Phone (800) 288-6000 • Fax (800) 255-1031 • Specifications subject to change without notice.

