

Catalog Number: Male Inline HBL20SPM Hubbell
20A/125V - 15A/250V

Use with 16/3 type SJO, 0.34" nom. through 12/3 type SO, 0.62" nom. Remove outer jacket 1-5/8" strip conductors 3/8" (DO NOT TIN).

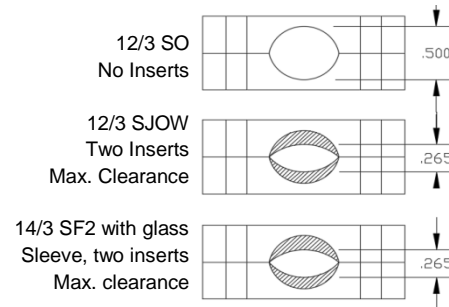
Place wire shoe over all loose wire strands of each conductor.

Insert wires into barrel of terminal (green wire in middle terminal) torque screws to 12 in-lbs.

Install strain relief inserts if required.

Attach cover and secure with (3) mounting screws – 12 in-lbs torque.

Cord holding system has six (6) different combinations offering openings from 0.50" to 0.60". Typical uses are depicted below.



Wiring Device-Kellems
Hubbell Incorporated (Delaware)
1-800-288-6000
Shelton, CT 06484
www.hubbell-wiring.com
PD2826 09/17



Distributor:



Phone: 407-857-8770

Fax: 407-857-8771

Email: sales@techni-lux.com

www.techni-lux.com