



ALTMAN
Lighting
Bringing Imagination to Light

PRODUCT SHOWCASE

Distributor:

Phone: 407-857-8770

Fax: 407-857-8771

Email: sales@techni-lux.com

www.techni-lux.com

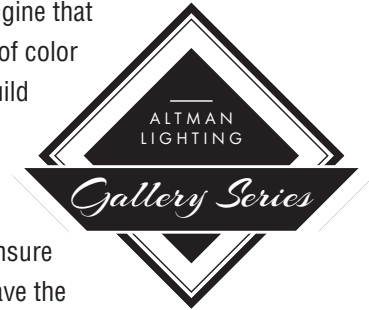

Techni-Lux



GALLERY SERIES

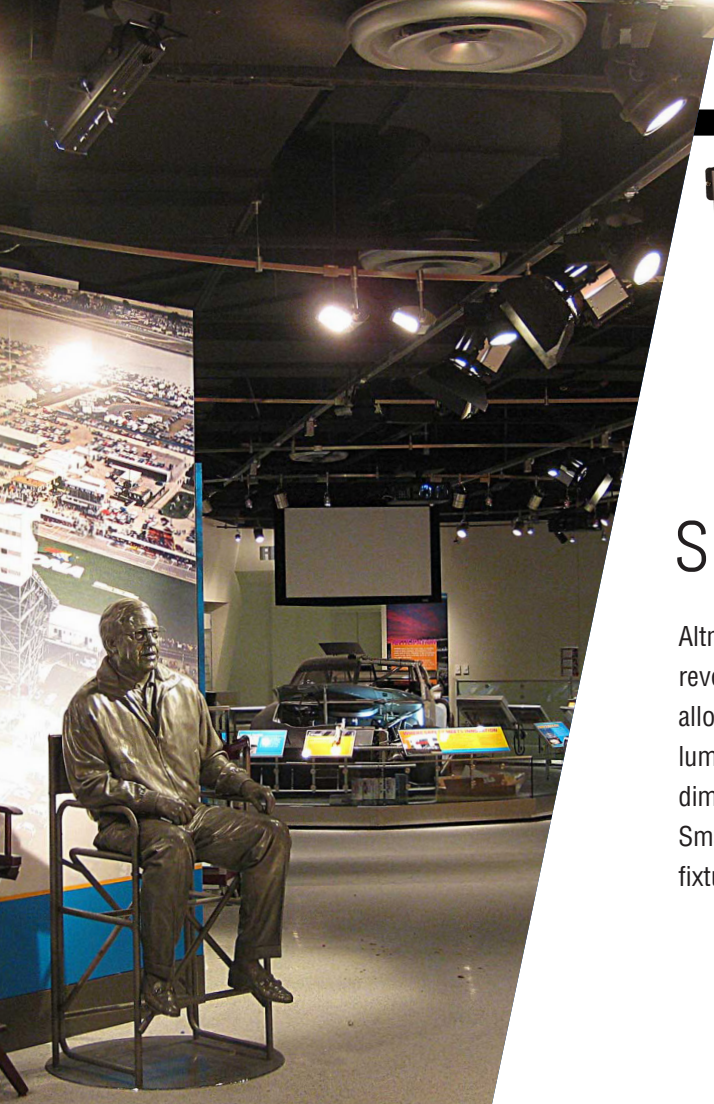
The Altman Gallery Series is a family of luminaires designed to serve as the most versatile solution available for museums, art galleries, hotels, restaurants and retail - anywhere aesthetic and performance expectations are high.

This scalable luminaire family is a 40w, 92+ CRI engine that offers an average of 4000 lumens across a variety of color temperatures. The Gallery Series can be used to build a mix and match variety of solutions that includes a 15-35° or 25-50° profile, a beam wash with variable beam angle range (15-60°) and a flood option (85°), all of which can be interchanged to ensure that your changing exhibits and atmosphere will have the lighting tools flexible to adapt.



The Altman Gallery Series is available in a variety of dimming options and offers an auto ranging 120-240v power supply, with a 277v option. A variety of mounting choices and finishes are available, as well as custom colors.





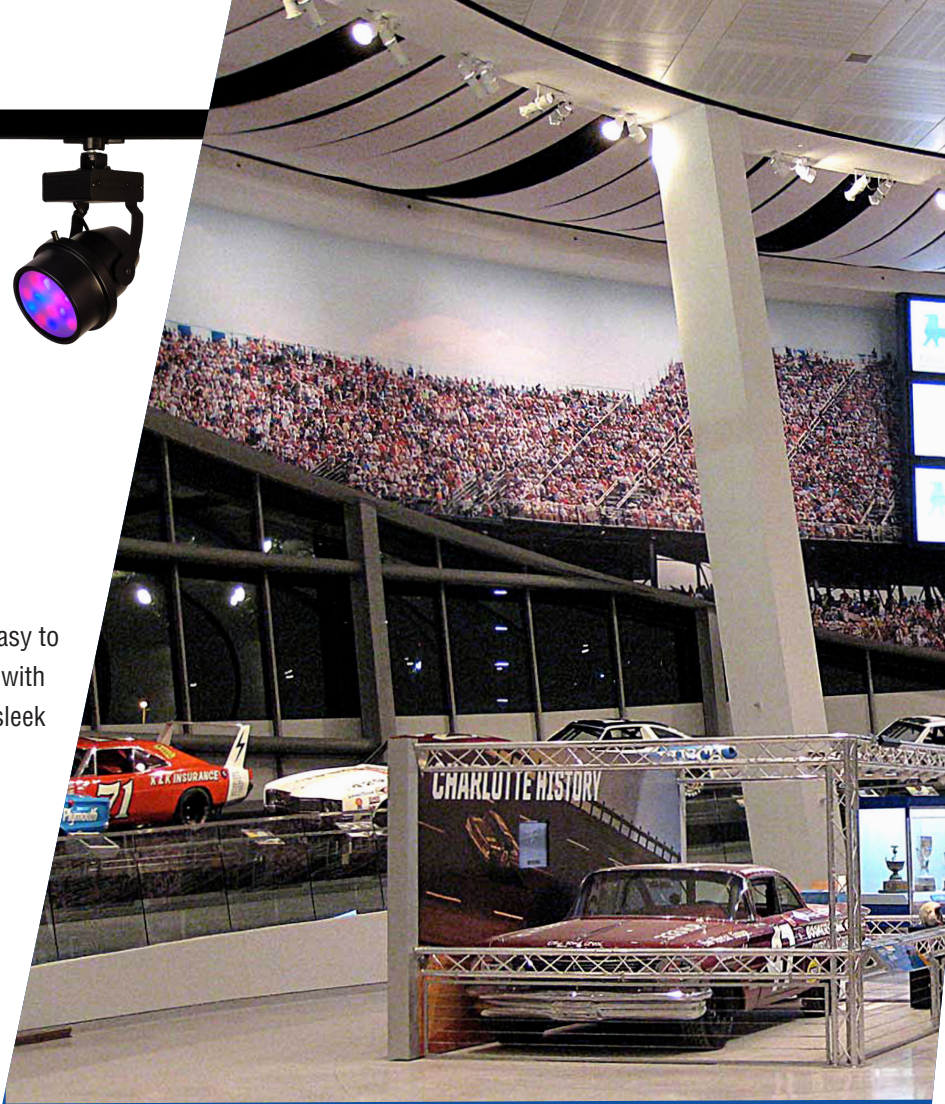
SMART TRACK®

Altman Lighting's Smart-Track® is a revolutionary data track system that allows for individually addressable luminaires without the need for dimmer packs or bulky cable runs. Smart-Track® features individual fixture control of dimmed, switched,

and LED sources on a shared power feed, all powered by the same circuit, fixtures are still able to maintain independent control, therefore using 75% fewer conductors than a traditional lighting track.



Smart-Track® systems are cost effective solutions that are easy to lay out, install, and maintain. Smart Track works seamlessly with Altman Lighting's new Gallery Series luminaires combining sleek aesthetics with maximum energy efficiency.



UV LED BLACKLIGHT

The Altman family of UV LED blacklights feature long life UV-A emitters that will exceed the performance of traditional metal halide source. With the ability to dim and strobe standard finally you can achieve a full range of UV effects without limits.



SPECTRA STRIP

Available in 200, 400 or 600w the Spectra Strip is Altman's silent, convection cooled LED borderlight for the 21st Century. Spectra Strip features individual pods that can be populated with RGBA, RGBW, 3000K, 6000K or a variety of custom array options.





Photo Credit: Parlights

CHALICE DOWNLIGHT

As the newest addition to our family of downlights, the Chalice 150 offers over 10,000 lumens of output making it one of the brightest solutions available on the market today. The Chalice 150 features field changeable reflectors and a single point source available in a variety of color temperatures all with a CRI of 90+.

The most versatile downlight on the market, the Chalice is also available as a 70w option, and available as either a DMX controlled or mains dimmable fixture.

Housing options for the 70w or 150w include pendent, yoke mount, wall mount, or recessed, and are perfect for retrofit applications.



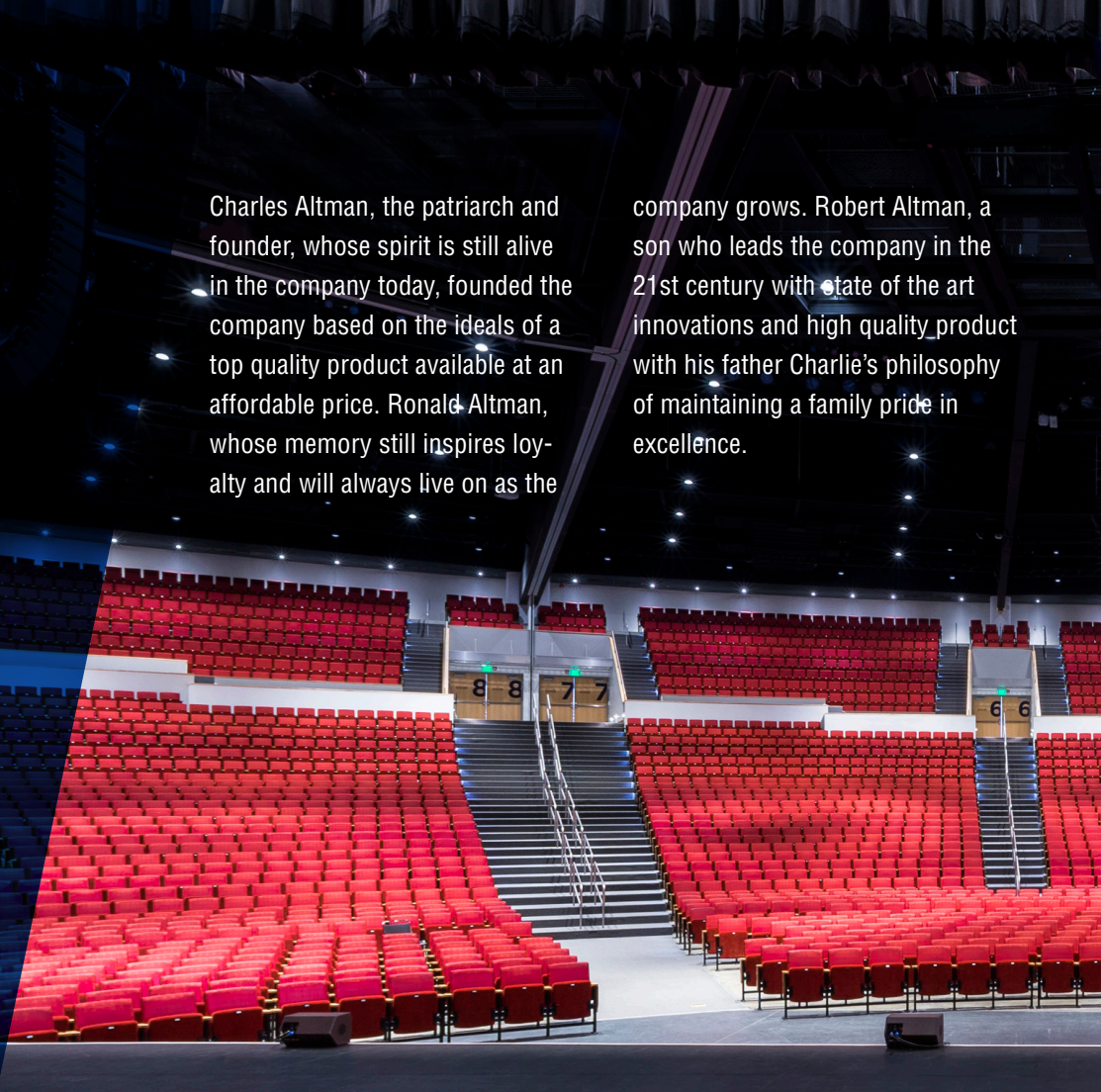
A name that stands for quality, durability, pride, and excellence... a name synonymous with tradition, dedication, and design innovation... a family name.

For over sixty years, the Altman™ name has stood true as one of the leading innovators of theatrical, architectural, film and video lighting available on the market today.

ALTMAN
Lighting
Bringing Imagination to Light

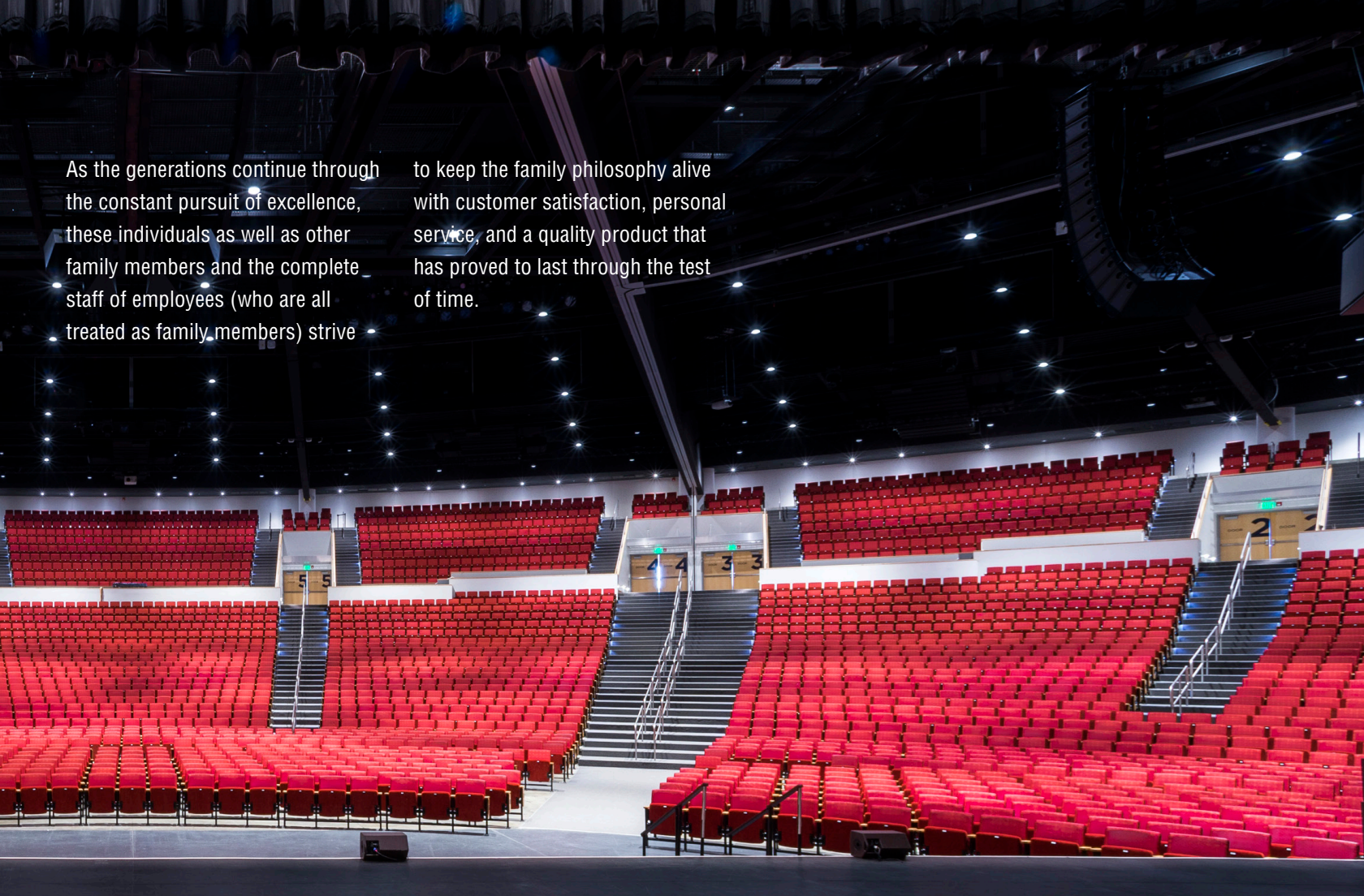
Charles Altman, the patriarch and founder, whose spirit is still alive in the company today, founded the company based on the ideals of a top quality product available at an affordable price. Ronald Altman, whose memory still inspires loyalty and will always live on as the

company grows. Robert Altman, a son who leads the company in the 21st century with state of the art innovations and high quality product with his father Charlie's philosophy of maintaining a family pride in excellence.



As the generations continue through the constant pursuit of excellence, these individuals as well as other family members and the complete staff of employees (who are all treated as family members) strive

to keep the family philosophy alive with customer satisfaction, personal service, and a quality product that has proved to last through the test of time.





PHX LED 150w



The PHX LED 150w is the very first long throw LED profile spot available that is completely convection cooled, making it ideal for any and all acoustically sensitive environments seeking to avoid the use of fans.

PHX LED 150w is available in various lens options (19°, 26°, 36° or 50° lens barrel) and, like its incandescent counterpart, the Profile Spot fixture features locking shutters, a fully enclosed accessory holder, and a 360° rotating barrel for difficult to achieve focus angles. the 150w also is available as Zoom fixture, with options of 15-35° and 30-55°. At only 150w this energy efficient fixture is designed to replace your standard 575w incandescent source seamlessly with no bench focusing required. Available in RGBA, RGBW, 3000K, 5600k white and tunable white array options.



PHX LED 250w

Our award winning PHX LED 250w is designed as a replacement to a 750w source ideal for long throw and large scale performance environments. The 250w is available as a fixed focus or Zoom fixture, and is ideal for constantly changing production and focus needs. RGBA, RGBW, 3000K, 5600k white and tunable white array options combine to make this one of the most versatile Profile Spot or Zoom LED profile spot solutions you will find and is proudly the recipient of the 2013 PLASA Member's choice award.



WORSHIP FACILITIES
NEW PRODUCT
AWARDS
WINNER
2014

plasa
MEMBERS
CHOICE
awards 2013
WINNER





PEGASUS SERIES FRESNELS

The Pegasus Series Fresnels are designed to replicate the look and function of a conventional Fresnel but with over 40% greater output than their incandescent predecessors. These Fresnels feature on board switching between DMX or mains dimmable control with the option of a 2700K, 3000K, 4000K, and 5000K white single point source emitter with a 90+ CRI.

plasa
MEMBERS
CHOICE
awards 2015
WINNER



SPECTRA CYC

The world's best selling LED cyc light's family of 50w, 100w and 200w fixtures welcomes the 400w Spectra Cyc designed to cover cycs in excess of 40' high and more.

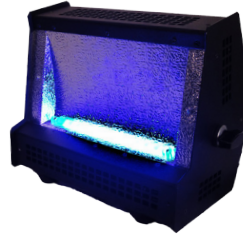


Photo Credit: Andrew Lindsay





LED WORKLIGHT

The Altman LED Worklight is a cost effective, high output solution perfect for any theatre space. Available in both 130w 3000K or 5000K arrays, our work light is a seamless replacement to any incandescent source.



Photo Credit: Jeremiah Brophy

altmanlighting.com



Bringing Imagination to Light

Altman Lighting Co. Inc.
57 Alexander Street
Yonkers, NY 10701

TOLL FREE: 800-4-ALTMAN
(425-8626)

sales@altmanlighting.com

photo credit: Ty Hester





ALTMAN



altmanlighting.com