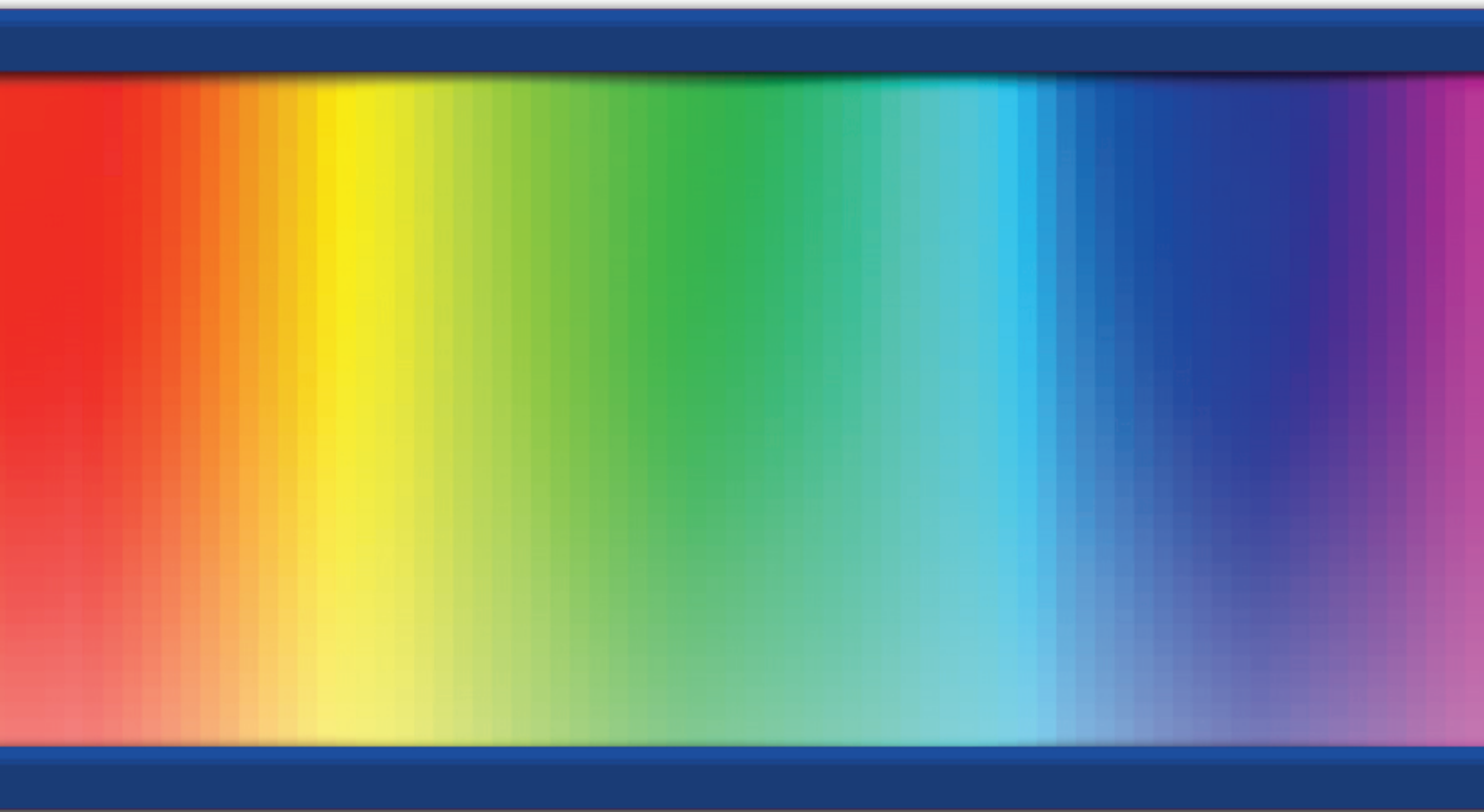




Catalog #50
All Products



- **Color and Correction Filters**2
- **Dance Floors**5
- **Fog Machine and Fluids**8
- **Gobos and Projection Equipment**10
- **LitePad Fixtures**15
- **Luminaire and Lighting Accessories**20
- **Scenic Shop Products**29
- **Staging Products for Theater, Film & Video**34

JOIN US →  Find us on Facebook  Follow us on twitter  Watch us on YouTube  Follow Our Blog SPECTRUM

Please note: all prices are U.S. list prices.
Rosco is not responsible for errors or omissions.
Prices subject to change without notice.
Catalog 50 version 1

■ Roscolux

Roscolux is the most widely used color filter range for theatre, film, television, live entertainment and architectural applications. For a detailed list of the colors and diffusers of the range consult the Roscolux swatchbook or Rosco web site.



Roscolux Sheets 20" x 24" \$8.25
Rolls 24" x 25' \$117.00

■ E-Colour+

A comprehensive range of European color and correction filters based on the Cinemoid™ system. For a detailed list of colors, diffusers and reflection materials consult the E-Colour+ swatch book or the Rosco web site.



E-Colour+ Sheets 21" x 24" \$7.60
E-Colour+ Rolls 48" x 25' \$165.00

■ Cinegel

The Academy Award® winning range of color and correction filters, Cinegel includes diffusers, reflectors and the Storaro Selection and CalColor filters. For a detailed list of products, consult the Cinegel swatch book or the Rosco web site.



Cinegel Sheets 20" x 24" \$8.25
Cinegel Rolls \$175.00
Diffusion Rolls \$169.75
 (Most rolls are 48" x 25'.)

PROTECTIVE FILTERS

■ Thermashield

When used in conjunction with Roscolux or Cinegel color filters, Thermashield prevents the color filters from absorbing IR energy as heat, thus allowing the filters to last much longer.

Thermashield 12" x 12" \$29.00
 No. 101 01995 1212
Thermashield 20" x 24" \$59.00
 No. 101 01995 2024
Thermashield 48" x 48" \$239.00
 No. 101 01995 4804

■ Super Heat Shield™

Super Heat Shield is a heat resistant plastic that acts as a barrier, blocking the heat of a fixture. For maximum efficiency, a minimum 1" air space must be maintained between Super Heat Shield and the color filter.

Super Heat Shield 20" x 24" sheet \$13.75
 No. 101 01991 2024
Super Heat Shield 24" x 25' roll \$169.95
 No. 101 01991 2425
Super Heat Shield 24" x 50' roll \$329.50
 No. 101 01991 2450
Super Heat Shield 48" x 25' roll \$329.50
 No. 101 01991 4825

■ UV Filter™

Rosco UV Filter effectively extends the life of your color filter by absorbing the damaging ultraviolet energy that can prematurely fade dyes.

UV Filter 20" x 24" sheet \$8.25
 No. 101 03114 2024
UV Filter 24" x 50' roll \$175.00
 No. 101 03114 2450
UV Filter 48" x 25' roll \$175.00
 No. 101 03114 4825

■ Safety Frames™

For use with Roscolux, Cinegel or E-Colour gel filters. Made from FRP, an Underwriter's Laboratories approved flame retardant fiberboard. The material remains cool for safe handling and has a UL94 Flammability Classification of 94V-0.

No. 110 08600

Add to Product No.	Frame Size	Lens Size	
0750	7½"	5⅞"	3.85
0975	9¾"	7¾"	5.50
0625	6¼"	5"	3.50

Color Effects Kit

The fifteen color effects filters in this kit are the most popular selections from the 300-plus colors that Rosco produces for theatre, film and television. Available either 10" x 12" in a durable plastic pouch, or 20" x 24" in a convenient tube.

Color Effects Kit 10" x 12" \$38.30

No. 110 09040 SKIT

Color Effects Kit 20" x 24" \$98.50

No. 110 09040 LKIT

Color Correction Kit

This kit permits the color correction of virtually all mixed-light sources found on location. There are sixteen materials, including a range of blue and amber color correction filters, along with a selection of green and magenta color compensating filters. Available either 10" x 12" in a durable plastic pouch, or 20" x 24" in a convenient tube.

Color Correction Kit 10" x 12" \$38.30

No. 110 09030 SKIT

Color Correction Kit 20" x 24" \$98.50

No. 110 09030 LKIT

Cinegel Sampler Kit

This is an all-purpose selection of the most popular Cinegel products. There are fifteen light control materials, including diffusion, reflection, color effects filters and color correction filters. Available either 10" x 12" in a durable plastic pouch, or 20" x 24" in a convenient tube.

Cinegel Sampler Kit 10" x 12" \$38.30

No. 110 09010 SKIT

Cinegel Sampler Kit 20" x 24" \$98.50

No. 110 09010 LKIT

CalColor Kit

The CalColor Kit consists of 10" x 12" sheets of the 32 colors in the CalColor range.

CalColor Kit 10" x 12" \$54.70

No. 110 04000 OKIT

Diffusion Kit

Diffusion materials help modify the harsh character of a light source by softening the beam and the resulting shadows. The fifteen materials included in this kit offer a range of diffusion effects, from slight to dense, for dealing with a variety of light sources and situations. Available either 10" x 12" in a durable plastic pouch, or 20" x 24" in a convenient tube.

Diffusion Kit 10" x 12" \$38.30

No. 110 09020 SKIT

Diffusion Kit 20" x 24" \$98.50

No. 110 09020 LKIT

Permacolor Dichroic Glass Filters

Rosco Permacolor dichroic glass filters are the perfect choice for designers requiring long-lasting, high-quality filters. Permacolor withstands the heat of high temperature lighting fixtures like MR16, metal halide discharge, and high wattage tungsten lamps and are ideal for use in permanent installations.

Rosco's range of standard colors includes the bright saturated colors prone to premature fading in gel as well as a selection of pale tints and accent colors selected by leading architectural designers around the world.

Color	No.	Color	No.
Bastard Amber	31002	Lilac	31055
Amber Blush	31018	Lavender 57	31057
Bright Straw	31012	Indigo	31059
Goldenrod	31013	Booster Blue	31062
Yellow	35200	Mediterranean Blue	31065
Amber	35401	Sea Blue	35700
Victorian Gold	33114	Cyan	35590
Medium Orange	35600	Light Green Blue	31076
Orange	35900	Sky Blue	35400
Flame Red	36100	Light Blue Green	35100
Primary Red	36500	Primary Blue	31080
Light Pink	31033	Medium Red Blue	34600
Pale Pink	31337	Deep Purple	34200
Medium Pink	34758	Peacock Blue	31073
Hot Pink	34630	Turquoise	34853
Deep Magenta	34763	Gaslight Green	33388
Vivid Magenta	34640	Industrial Green	31086
Lavender	34965	Light Yellow Green	34959
Mauve	31050	Fern Green	35156
Purple Fusion	31048	Primary Green	34954
Lavender Accent	31054		

Color	No.	Color	No.
White Diffusion	33026	ND .15	43415
IR/UV Block	38000	½ Minus Green	43313
UV Blocker	34000	¼ Minus Green	43314
CTO	43407	⅓ Minus Green	43318
¾ CTO	43411	CTB	43202
½ CTO	43408	¾ CTB	43203
¼ CTO	43409	½ CTB	43204
⅓ CTO	43410	¼ CTB	43208
ND .6	43403	Double Coated	
ND .3	43402	UV Pass	33660

Size	Suffix	Price
2" x 2" (50.8 mm) square	2050	\$ 8.95
1.95" (49.5 mm) round	2049	8.95
5.25" (133 mm) round	2133	57.75
6.3" (160 mm) round	2160	69.75
8.25" (209 mm) round	2209	142.50

Custom sizes available, call for pricing.

Permacolor Frames

(Safety Grid Included)

Permacolor Frame 6.25" \$17.00

No. 97625

Permacolor Frame 7.5" x 7.5" \$18.25

No. 97750

Permacolor Frame 10" x 10" \$23.00

No. 97100

LED Channel Mount

Rosco's LED Channel Mount Kit allows designers to add Rosco color and diffusion filters to LED tape or ribbon, and package it in an elegant and practical housing. The Kit consists of a 72" long extruded aluminum heat-sink, a clear plastic cover, three mounting clips and end caps. Four Rosco color filters are available, cut-to-size, for individual sale. All other Rosco color filters are available, cut-to-size, in lots of 20.



- LED Channel Mount - 6ft (1.8m) Kit Complete** \$96.95
No. 295610000072
- LED Channel Mount - Adjustable Bracket Complete** \$35.00
No. 295611010003
- LED CM Diffusion - Tough Rolux - 1/8in (3.6cm) x 6ft (1.8m)** \$4.00
No. 295701110072
- LED CM Filter - CTO - 1/8in (3.6cm) x 6ft (1.8m)** \$4.00
No. 295734070072
- LED CM Filter - 1/2 CTO - 1/8in (3.6cm) x 6ft (1.8m)** \$4.00
No. 295734080072
- LED CM Filter - 1/4 CTO - 1/8in (3.6cm) x 6ft (1.8m)** \$4.00
No. 295734090072
- LED CM Filter - OTHER COLOR - 1/8in (3.6cm) x 6ft (1.8m) - QTY 20** \$80.00
No. 295799992072

Lens/Reflector Cleaner

The professional's choice for over 50 years. Specially designed for cleaning lenses, mirrors, reflectors, glass and dichroic filters, and other fine quality optics.

- Lens Cleaner 2 ounce drip bottle** \$ 3.95
No. 855 07202 0002
- Lens Cleaner 8 ounce spray bottle** \$10.95
No. 855 07202 0008
- Lens Cleaner 16 ounce bulk bottle** \$17.95
No. 855 07202 0016

Lens Tissue

Premium, lightweight, disposable, micro-fiber tissue for cleaning lenses, filters and optics.

- Lens Tissue 4" x 6" booklet** \$3.95
No. 855 07204 0406

Storage Drawers

Heavy gauge two-inch deep corrugated drawer and sleeve that accepts 20" x 24" sheets of Rosco color filters. Shipped completely assembled. Packed six to a case.

- Storage Drawers (set of 6)** \$59.00
No. 110 08610 0000

Roscosleeves™

For simple and economical control of fluorescent lighting, Roscosleeves can be supplied in any Rosco filter color—(or combination of colors) Roscolux, Cinegel or E-Colour. Not recommended for use with High Output or Very High Output lamps. T5 and T8 Sleeves come standard with UV filter in addition to the color selected.

T5 x 24"	\$8.95	No. 110 08401 2405
T8 x 24"	8.95	No. 110 08401 2408
T12 x 24"	7.95	No. 110 08401 2412
T5 x 36"	16.95	No. 110 08401 3605
T8 x 36"	16.95	No. 110 08401 3608
T12 x 36"	14.95	No. 110 08401 3612
T5 x 48"	16.95	No. 110 08401 4805
T8 x 48"	16.95	No. 110 08401 4808
T12 x 48"	14.95	No. 110 08401 4812
T5 x 60"	21.25	No. 110 08401 6005
T8 x 60"	21.25	No. 110 08401 6008
T8 x 96"	29.00	No. 110 08401 9608
T12 x 96"	22.50	No. 110 08401 9612

ChromaSleeves

ChromaSleeves are body-colored, extruded polycarbonate sleeves with an added UV absorber to prevent premature color fading. Available in nine standard stocked colors or custom colors matched to any Rosco filter. Not recommended for use with High Output or Very High Output lamps

Royal Blue	No. 110 08410	Pink	No. 110 08414
Green	No. 110 08411	Yellow	No. 110 08415
Ruby Red	No. 110 08412	Amber	No. 110 08417
Purple	No. 110 08413		

Add suffix to product code for each size
T5 x 48" \$13.25 4805
T8 x 48" 13.25 4808

Quick Color Sleeves

This gel-only product is a flat welded tube of Rosco color filter, made in any color from any line of Rosco gel. T5 and T8 sleeves come standard with UV filter. Folded flat for easy shipping and storage, the sleeve puffs open like an envelope to slide over any size or shape of fluorescent tube. Not recommended for use with High Output or Very High Output lamps



T5 x 24"	\$11.95	No. 110 08430 2405
T8 x 24"	11.95	No. 110 08430 2408
T12 x 24"	11.95	No. 110 08430 2412
T5 x 36"	12.95	No. 110 08430 3605
T8 x 36"	12.95	No. 110 08430 3608
T12 x 36"	12.95	No. 110 08430 3612
T5 x 48"	13.95	No. 110 08430 4805
T8 x 48"	13.95	No. 110 08430 4808
T12 x 48"	13.95	No. 110 08430 4812
T5 x 60"	17.95	No. 110 08430 6005
T8 x 60"	17.95	No. 110 08430 6008
T12 x 60"	17.95	No. 110 08430 6012

Please specify Rosco gel color when ordering.

Floor Catalog

Rosco's floor products are organized in a multi-page catalog. Available as a download at www.rosco.com



Dance Floor

Rosco Dance Floor is lightweight (1.9 pounds per linear foot) and is reversible with black on one side and your choice of white or grey on the other. Floor thickness is .05" (1.3 mm), width is 63" and it is sold by the linear foot or full rolls 131.25 feet long.

- Black/Grey 63" x linear foot \$12.75**
No. 300 58720 63XX
- Black/Grey 63" x 131.25 feet \$1,528.00/roll**
No. 300 58720 6300
- Black/White 63" x linear foot \$12.75**
No. 300 58723 63XX
- Black/White 63" x 131.25 feet \$1,528.00/roll**
No. 300 58723 6300
- Blue/Green Chroma Floor 63" x 131.25 feet \$1,495.00/roll**
No. 300 58726 6300



Adagio™

Adagio's durable surface can handle tap and other hard shoe dance styles, yet it is supple enough for ballet and modern dance styles. Since Adagio is dimensionally stable, it is suitable for permanent or semi-permanent installation. 2.5 lbs. per linear foot/250 lbs. per roll. Floor thickness is .06", width is 63", and it is sold by the linear foot or full rolls 101.7 feet long.

- Black 63" x linear foot \$17.25**
No. 300 58922 63XX
- Black 63" x 101.7 feet \$1,595.00/roll**
No. 300 58922 6300
- Grey 63" x linear foot \$17.25**
No. 300 58935 63XX
- Grey 63" x 101.7 feet \$1,595.00/roll**
No. 300 58935 6300

Adagio™ Tour

Adagio Tour lays flat quickly and provides the same versatile surface as Adagio. Adagio Tour weighs only 1.6 lbs. per linear foot so, as its name implies, it is excellent for touring dance companies. Floor thickness is .04", width is 63" and is sold by the linear foot or full rolls 101.71 feet long.

- Black 63" x linear foot \$13.00**
No. 300 58622 63XX
- Black 63" x 101.71 feet \$1,206.00/roll**
No. 300 58622 6300
- Grey 63" x linear foot \$13.00**
No. 300 58635 63XX
- Grey 63" x 101.71 feet \$1,206.00/roll**
No. 300 58635 6300

Arabesque™

Arabesque is, on a cost-per-square-foot basis, Rosco's most affordable multi-purpose floor. Arabesque is available with a marbled finish, adding both a note of elegance and the practical advantage of helping to hide scuff marks. Floor thickness is .78" (2 mm), width is 79". It can be specified by the linear foot or full rolls 65.6 feet.

- Marble Black 79" x linear foot \$18.50**
No. 300 58222 79XX
- Marble Black 79" x 65.6 feet \$1,095.00/roll**
No. 300 58222 7900
- Marble Grey 79" x linear foot \$18.50**
No. 300 58235 79XX
- Marble Grey 79" x 65.6 feet \$1,095.00/roll**
No. 300 58235 7900
- Marble Tan 79" x linear foot \$18.50**
No. 300 58218 79XX
- Marble Tan 79" x 65.6 feet \$1,095.00/roll**
No. 300 8218 7900

■ Studio Floor

An ultra matte, black vinyl floor for ballet, theatre, or any application where a light-absorbing surface is needed. Studio Floor is not appropriate for heavy traffic or other types of dance. Studio Floor is .08" thick and rolls measure 6 feet wide by 60 feet long, weighing 250 pounds. Sold by full roll only..

Studio Floor Black Matte 6' x 60' \$1,525.00 per roll

No. 300 78035 7200

■ Performance Floor

A durable, all-purpose floor, best for permanent or semi-permanent installations in studios, multi-purpose rooms, stages and showrooms—anywhere traffic is heaviest. Available in black, white, light and dark grey. Performance Floor is .1" thick and rolls measure 6 feet wide by 60 feet long, and weigh 280 pounds. Sold by full roll only.

Black 6' x 60' \$1,695.00

No. 300 73035 7200

White 6' x 60' \$1,695.00

No. 300 73030 7200

Light Grey 6' x 60' \$1,695.00

No. 300 73031 7200

Dark Grey 6' x 60' \$1,695.00

No. 300 73025 7200

■ Roscolem Floor

A hardwearing floor that provides an ideal surface for the heaviest traffic areas. It stands up to tap, Flamenco and Irish dance but will easily accommodate soft shoe styles as well. .1" thick, 78.7" wide and approximately 104.92 feet long. Weight is 4 lbs. per linear foot, 425 lbs. per roll. Sold by full roll only.

Black 78.7" x 104.92' \$2,360.00/roll

No. 300 58122 7900

Grey 78.7" x 104.92' \$2,360.00/roll

No. 300 58135 7900

■ Show Floor

Super glossy floor for special events, commercials and fashion promotions. It is not recommended for heavy traffic or for permanent installation. Available in high gloss black, white and red. Show Floor is .08" thick, and each roll measures 6 feet wide by 60 feet long, weighing 275 pounds. Sold by full roll only.

Black \$1,450.00/roll

No. 300 74035 7200

White \$1,450.00/roll

No. 300 74030 7200

Red \$1,450.00/roll

No. 300 74036 7200

■ Roscotiles

This rugged floor product is 3 foot by 3 foot squares, making it easy to pick up and put down. Designed for video production facilities, each 1/8" thick, 12 pound tile is designed to lie flat for temporary, as well as permanent installations. Available in White, Black and TV Grey.

White \$44.50/tile

No. 300 08415 3636

Black \$44.50/tile

No. 300 08422 3636

TV Grey \$44.50/tile

No. 300 08435 3636

■ Rosco SubFloor

Rosco SubFloor can be bolted to concrete or wood floors and can also be removed and re-used. The system consists of 42" x 42" panels which lock into each other with the unique Wave-Lock™ design. Perimeter pieces, 4 3/8" wide, lock the entire floor together.

Semi-Permanent Studio System Components

42" x 42" x 2" Panel \$149.00

No. 300 08000 4242

4 3/8" x 3'6" x 2" Perimeter \$110.00

No. 300 08010 0042

4 3/8" x 7' x 2" Perimeter \$139.00

No. 300 08010 0084

Outside Corner \$149.00

No. 300 08015 0000

Customizing Panels \$72.00

No. 300 08040 4242

Inside Corner \$149.00

No. 300 08016 0000

21" x 3'6" x 2" Ramp \$199.00

No. 300 08020 0000

21" Corner Transition Ramp \$575.00

No. 300 08021 0000



Unique WaveLock™ design assures easy installation and safe, secure flooring.

Floor Cleaners

Rosco offers different floor cleaning products, designed to meet every need. Cleaners available in liters, gallons or cases of liters or gallons.



Rosco All Purpose Floor Cleaner

Designed for the routine, regular cleaning of all Rosco vinyl floors.

- 1 liter \$12.00**
No. 300 09116 0034
- 1 gallon \$30.00**
No. 300 09116 0128

Rosco Heavy Duty Floor Cleaner

For stripping and deep cleaning of Rosco floors.

- 1 liter \$12.00**
No. 300 09112 0034
- 1 gallon \$30.00**
No. 300 09112 0128

Granulated Floor Cleanser

Granulated, dissolvable chemical for cleaning all Rosco flooring surfaces.

- 2 lb. tub \$11.95**
No. 300 08710 0002



Floortapes

For installing floors in temporary and semi-permanent situations.

- Black Vinyl tape 48 mm x 33 m \$13.00**
No. 851 05014 4833
- White Vinyl tape 48 mm x 33 m \$13.00**
No. 851 05015 4833
- Grey Vinyl tape 48 mm x 33 m \$13.00**
No. 851 05016 4833
- Clear Vinyl tape 48 mm x 33 m \$13.00**
No. 851 05013 4833
- Roscofloor Double Stick tape 48 mm x 25 m \$16.30**
No. 851 08740 4825

Floor Adhesives

For permanent installations. Consult a professional flooring contractor before installation.

Premium Adhesive No. 755

For most porous surfaces, including concrete which is above grade.

- 1 Gallon Pail (weighs 12 lbs.) \$64.00**
No. 300 08755 0128
 - 3 Gallon Pail (weighs 31 lbs.) \$190.00**
No. 300 08755 0448
- Coverage is approximately 200 sq. ft. per gallon.

Epoxy Adhesive No. 300

For non-porous surfaces and concrete below grade.

- 1 Gallon Kit (weighs 15 lbs.) \$79.00**
No. 300 08300 0128
- Coverage is approximately 110 sq. ft. per gallon.

Roscoleum Adhesive

For use with Roscoleum floor only.

- 4 Gallons (weighs 44 lbs.) \$160.00**
No. 300 08100 0512

Floor Welding Threads

Welding threads are available to aid in permanent seam sealing by professional contractors. Rosco has welding threads available for Adagio, Roscoleum, Arabesque, Performance Floor, and Studio Floor.

Floor Type	Roll Length	Price
Adagio	164 feet	\$ 48.00
Roscoleum	165 feet	130.00
Performance Floor	500 feet	102.50
Arabesque	410 feet	92.00
Studio Floor	500 feet	122.00

PortaBarre™

A truly portable ballet dance barre, Rosco's aluminum PortaBarre uses an internal double button interlocking system, making assembly and disassembly a matter of a few minutes, without requiring tools or locking keys. Sold complete with a custom designed carrying case.

- 9' barre with carrying case \$465.00**
No. 300 09095 0108
- 4'6" barre with carrying case \$289.95**
No. 300 09095 0054

Rosco Floor Bag

Designed specifically for dancers and dance companies who tour, the Rosco Floor Bag is made of durable water-resistant PVC fabric. A hook and loop fastener along the entire length of the bag keeps it securely shut while in transit, and also allows it to open flat for loading and unloading.

- Rosco Floor Bag \$150.00**
No. 300 59000 6300

■ Delta 3000™

Produces greater fog output than any machine in its price class. DMX is standard equipment and is available with a choice of two remote control devices.



Delta 3000 Base Unit 120v \$895.00

No. 200 13000 0120

Delta 3000 Base Unit CE 240v \$995.00

No. 200 13000 0240

Delta Digital/DMX Remote Control Device \$&#).00

No. 200 13000 DDMX

Delta 3000 Carrying Case \$400.00

No. 200 43000 0000

4 inch Hose Adapter \$41.50

No. 200 61690 0004

Ducting Hose 4 inch x 10 feet \$49.95

No. 200 61695 0#" &

■ Delta 6000™

Rosco's most powerful fog machine, consuming more than nine liters of fog fluid per hour. Uses the same basic electronics as the Delta 3000, including DMX as standard equipment.



Delta 6000 120v Base Unit (requires remote control) \$1,975.00

No. 200 16000 0120

Delta 6000 240v Base Unit (requires remote control) \$2075.00

No. 200 16000 0240

Delta Digital/DMX Remote Control \$&#).00

No. 200 13000 DDMX

Delta 6000 Carrying Case \$595.00

No. 200 46000 0000

■ Model 1700™

The Rosco Model 1700 fog machine is a high quality machine—durable, dependable, and with a lower cost. The machine delivers fog output more than previous fog machines, but draws less power—1190W.



Model 1700 120v with remote \$825.00

No. 200 21700 0120

Model 1700 240v with remote \$860.00

No. 200 21700 0240

1700/1900 DMX Remote \$235.00

No. 200 51700 RDMX

50' remote extension—1700/1900 \$67.50

No. 200 51587 0050

100' remote extension—1700/1900 \$89.90

No. 200 51588 0100

Model 1700 Carrying Case \$450.00

No. 200 41700 0000

■ Model 1900™

Rosco's Model 1900 fog machine is a very high output professional fog machine, designed primarily for industrial applications. Its most unique feature is the extremely high output, almost twice as much as the Model 1700.



Model 1900 120v with remote \$950.00

No. 200 21900 0120

Model 1900 240v with remote \$995.00

No. 200 21900 0240

RDMX 1700/1900 DMX Remote \$235.00

No. 200 51700 RDMX

50' remote extension—1700/1900 \$67.50

No. 200 51587 0050

100' remote extension—1700/1900 \$89.90

No. 200 51588 0100

Model 1900 Carrying Case \$475.00

No. 200 41900 0000

Alpha 900™

Rosco's most economical fog machine is an excellent choice for applications where the effect does not need volume control. A simple on-off switch, in the remote control only, initiates a remarkably powerful stream of fog.



Alpha 900 – 120v \$495.00

No. 200 20900 0120

Alpha 900 – 240v \$505.00

No. 200 20900 0240

Alpha 900 Carrying Case \$395.00

No. 200 40900 0000

Alpha 900 30' Remote Extension Cable \$32.00

No. 200 50978 0030

4" Hose Adapter \$41.50

No. 200 61690 0004

Ducting Hose 4 inch x 10 feet \$49.95

No. 200 61695 0#" &

Coldflow™

Converts liquid carbon dioxide to dry ice to chill an aluminum chamber. The output of a fog machine passes through the aluminum chamber and is chilled so that it lays close to the ground. For best effect use Rosco Stage & Studio Fluid.



Coldflow – 120v \$1,695.00

No. 200 61700 0120

Coldflow – 240v \$1,745.00

No. 200 61700 0240

Rosco Bubble Fluid

Building on Rosco's 30+ years of success manufacturing the world's highest quality fog fluids, Rosco has developed a new formulation of bubble fluid. Engineered as a universal fluid to work in any bubble machine, Rosco's water-based Bubble Fluid creates higher volumes of extra colorful bubbles that fly higher and farther than existing fluids currently available—with next to no residue left behind, which makes it safer to use on performance and dance spaces or in areas with expensive technology.

Bubble Fluid – Gallon \$31.50

20009500012*



Rosco has been honored by the Academy of Motion Picture Arts and Sciences® four times. One of the Oscars (in this case a Scientific and Technical Award) was for "the development of a safe, non-toxic fluid for use in motion pictures."

Rosco Fog Fluid

Rosco Fog Fluid, for over 30 years is the most widely used fog fluid in theatre, live entertainment and theme parks. When vaporized, this water-based formulation produces a dense, realistic fog with a long hang time.

Fog Fluid Liter \$16.95

No. 200 08200 0034

Fog Fluid 4 Liter Bottle \$59.95

No. 200 08200 0135

Stage and Studio Fog Fluid

A water-based fluid which creates dense fog that will dissipate more quickly than standard fluid. Also recommended for use with the Rosco Coldflow to produce low-lying fog.

Stage and Studio Fog Fluid Liter \$16.95

No. 200 09000 0034

Stage and Studio Fog Fluid 4 Liter Bottle \$59.95

No. 200 09000 0135

Rosco Clear Fog Fluid

Produces dense fog with a long hang time without the traditional Rosco scent.

Clear Fog Fluid Liter \$16.95

No. 200 08600 0034

Clear Fog Fluid 4 Liter Bottle \$59.95

No. 200 08600 0135

Rosco Light Fog Fluid

A lighter, less dense fog.

Light Fog Fluid Liter \$13.95

No. 200 08500 0034

Light Fog Fluid 4 Liter Bottle \$48.50

No. 200 08500 0135

Delta Haze Fluid

Rosco's Delta Haze Fluid is specially formulated to work with the Delta Hazer. Because it is water based, it leaves no oily residue.

Delta Haze Fluid 4-Liter Bottle \$59.95

No. 200 08425 0135

F-1 Fog Fluid

Rosco's F-1 Fog Fluid is designed to be compatible with the popular High End F-100™ Fog Generator. Available in a 2.5 gallon bottle, this formulation is composed of the highest grade components available.

F-1 Fog Fluid 2.5 Gallon Bottle \$95.00

No. 200 08700 0320

Gobo Catalog

Rosco's Gobo Catalog lists the entire range of standard gobos available, as well as several pages of useful technical information. It is available from any Rosco office or reseller or may be downloaded from the Rosco website. You can also choose gobos from the Rosco web site (www.rosco.com) or from the free MyGobo app for iPhones, iPads, and iPod Touch.



Standard Designs

Rosco offers approximately 2,000 standard designs in its gobo collection. Each design is available for virtually any known fixture used in theatrical or display lighting. Rosco re-sellers can usually deliver standard gobos either off the shelf or within a day or two.



No. 77730

Standard metal gobos \$13.50

Standard mesh designs \$19.75

Standard B&W glass gobos A, B or M size \$85.00

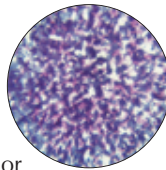
Moving light sizes \$59.50

Standard 2-color gobos \$150.00

Standard multi-color gobos \$350.00

Colorizers™

Multi-colored glass gobos that can be used alone or in combination with a steel gobo. Recommended for fixtures up to 1,000 watts. Requires the use of either a Glass Gobo Holder or the Universal Iris Slot Holder.



*No. 55004

Colorizer B size and Moving Light size \$65.00

Colorizer X size (for use in Rosco's X24) \$79.00

Designs marked with an asterisk () are available in X size*

Stippled Series

Blue and Lavender	*No. 55004
Amber and Red	*No. 55005
Red, Blue and Lavender	*No. 55006
Green, Blue and Lavender	*No. 55007
Green and Yellow	*No. 55008

Featherlight Series

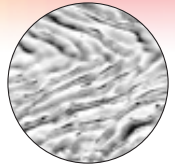
Blue, Lavender and Yellow	No. 56201
Blue and Green	No. 56202
Red, Lavender and Yellow	No. 56203
Blue and Lavender	No. 56204
Green and Yellow	No. 56205

Free Flow Series

Cool: Blues, Reds and Lavenders	*No. 56101
Warm: Red, Ambers, Blue and Lavenders	*No. 56102
Midnight: Blues, Lavenders and Greens	*No. 56103

Image Glass™

Deeply textured glass gobos that bend or refract light. Recommended for use in moving lights with lamps up to 1200 watts and in ellipsoidal fixtures up to 600 watts. Requires the use of the Universal Iris Slot Holder.



No. 33621

Image Glass B size and sized for moving lights \$37.50

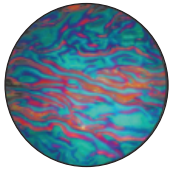
Image Glass X size (for use in Rosco's X24) \$52.50

Designs marked with an asterisk () are available in X size*

Flower	*No. 33600	Random Blisters	No. 33614
Lined	*No. 33601	Coalescing	
Plume	No. 33602	Bubbles	*No. 33615
Lt. Plume	No. 33603	Raised Mosaic	No. 33616
Pebble	No. 33604	Hammered	*No. 33617
Honeycomb	*No. 33605	Wood Grain	*No. 33618
Waves	*No. 33606	Ripples	*No. 33619
Irregular		Ice	*No. 33620
Strands	*No. 33607	Dune	*No. 33621
Banded Lines	*No. 33608	Sparkelite	*No. 33622
Lazy Swirls	*No. 33609	Reflections	No. 33623
Basket Weave	*No. 33610	Rain Glass	No. 33624
Pin Feathers	No. 33611	Foam Bubbles	No. 33625
Winter Frost	No. 33613		

ColorWaves™

Each ColorWave glass gobo is coated in one of five dichroic colors. There are four different styles—Waves, Ripple, Strands, Mosaic—and thus 20 different choices in the range. Recommended for use in moving lights with lamps up to 1200 watts and in ellipsoidal fixtures up to 600watts. Requires the use of the Universal Iris Slot Holder.



*No. 43104

ColorWave B size \$79.50

ColorWave Moving Light size \$57.25

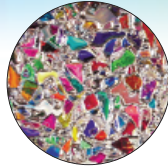
Colorwave X-size (for use in Rosco's X24) \$99.95

Designs marked with an asterisk () are available in X size*

Waves - Red	No. 33001	Mosaic - Red	No. 33301
Waves - Amber	*No. 33002	Mosaic - Amber	No. 33302
Waves - Magenta	*No. 33003	Mosaic - Magenta	No. 33303
Waves - Cyan	*No. 33004	Mosaic - Cyan	No. 33304
Waves - Indigo	*No. 33005	Mosaic - Indigo	No. 33305
Ripple - Red	*No. 33101	Sparkelite - Red	No. 33401
Ripple - Amber	*No. 33102	Sparkelite - Amber	No. 33402
Ripple - Magenta	*No. 33103	Sparkelite - Magenta	No. 33403
Ripple - Cyan	*No. 33104	Sparkelite - Cyan	No. 33404
Ripple - Indigo	*No. 33105	Sparkelite - Indigo	No. 33405
Strands - Red	*No. 33201		
Strands - Amber	*No. 33202		
Strands - Magenta	*No. 33203		
Strands - Cyan	*No. 33204		
Strands - Indigo	*No. 33205		

■ Prismatic™

Recommended for use in moving lights with lamps up to 1200 watts and in ellipsoidal fixtures, lamps up to 600watts. Requires the use of the Universal Iris Slot Holder.



No. 43801

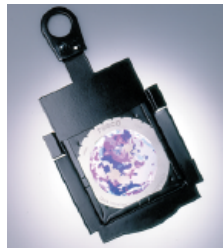
Prismatic B size and moving light size \$65.00

Prismatics are not available for use in Rosco's X24.

Kaleidoscope	No. 43801	Fiery Sun	No. 43806
Cool Lavender	No. 43802	Warm Contrast	No. 43807
Spring Greens	No. 43803	Patriotic	No. 43808
Sunset	No. 43804	Crystalline	No. 43809
Blue Water	No. 43805		

■ Universal Iris Slot Holder

Allows a glass gobo to be placed in the iris slot of fixture in front of the gate. Double sided to allow the use of two gobos, glass and/or steel, in the iris slot at the same time. Fits the ETC Source Four, Altman Shakespeare and other modern spotlights. For use with 86 mm standard "B" size glass gobos only.



Universal Iris Slot Holder \$15.95
No. 250 15786 0000

■ Glass Gobo Holders

Glass Channel Holder

BG Size Glass Gobo Holder (79 mm) — Altman fixtures \$11.95

No. 250 14579 0000

Standard "B" Size Glass Gobo Holder (86 mm) — ETC S4 \$11.95

No. 250 14686 0000

"M" Size Glass Gobo Slot Holder — ETC Source 4 Jr. \$11.95

No. 250 14666 0000

"M" Size Glass Gobo Iris Slot Holder — ETC Source 4 Jr. \$21.95

No. 250 15666 0000

"A" Size Glass Gobo Iris Slot Holder — ETC Source 4 \$24.95

No. 250 15610 0000

■ Steel Gobo Holders

Tab Holder

"B" Size Tab Holder — Altman fixtures \$8.95

No. 250 12586 0000

Sandwich Holder

"B" Size Sandwich Holder — Altman fixtures \$9.95

No. 250 13586 0000

"B" Size Sandwich Holder — ETC S4 \$9.95

No. 250 13686 0000

"A" Size Sandwich Holder — ETC S4 \$9.95

No. 250 13610 0000

"M" Size Steel Gobo Slot Holder — ETC Source 4 Jr. \$9.95

No. 250 13666 0000

■ iPro™ Slide Library

Designed specifically for the iPro, Rosco offers images in a wide range of categories that are certain to suit your needs for most theatrical productions and live entertainment events.



iPro Slide-Library Image \$39.00

■ Custom iPro™ Slide

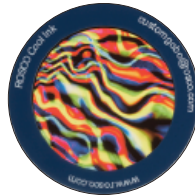
Virtually any design you can create on your computer can be made into a Custom iPro Slide in just one day. Using Adobe Photoshop or similar software, prepare your design and send it to Rosco at custom-gobo@rosco.com. Within 24 hours, your finished assembled iPro slide will be on its way back to you.

Custom iPro Slide \$39.00

No. 265 27000 0860

■ Cool Ink™ Plastic Gobos

Cool Ink gobos are an excellent solution for short term projections in many LED luminaires. Please check with the fixture manufacturer, or Rosco, to ensure that your LED luminaire will accept plastic gobos.



The lightweight hard plastic rim Cool Ink gobos secure the plastic and protect the gobo. The adhesive, similar to that used and tested in the i-Pro process, makes the gobo more robust and prevents the product from wrinkling.

Custom Plastic Gobo, Custom Size \$39.00

No. 265 27000 0999

Cool Ink Standard Gobo Design \$39.00

No. 265 27000 0000

Cool Ink Custom Plastic Gobo, "B" Size \$39.00

No. 265 27000 C186

Cool Ink Custom Plastic Gobo, "E" Size \$39.00

No. 265 27000 0375

Kreios Cool Ink Custom Plastic Gobo \$39.00

No. 265 2700KR375

■ Cool Ink™ HD Gobos

Cool Ink HD gobos are recommended when your artwork has a black background. Glass layers and bezels are added to the HD product to alleviate most issues caused by heat. Among the issues prevented are wrinkling of the plastic which can distort the image. Rosco provides the same fast turnaround for both Cool Ink and Cool Ink HD gobos.



Cool Ink HD Custom Plastic Gobo, Custom Size \$59.00

No. 265 2700HD999

Cool Ink HD Custom Plastic Gobo, "B" Size \$59.00

No. 265 27000HD86

Cool Ink HD Standard Gobo Design \$59.00

No. 265 2700HD000

Kreios Cool Ink Custom Plastic Gobo, specifically for Kreios units, 37.5mm \$59.00

No. 255 2HDKR375

Belts vs. Gears:

The Vortex 360 and the Double Gobo Rotator, shown on the next page, use precision machined metal gears as the drive mechanism. From the motor shaft to the gobo wheel, each point of contact in the drive assembly is gear to gear. The advantages are as obvious now as they were nearly twenty years ago when these products were first designed—rock solid reliable movement and a durable, low maintenance mechanism.

The Revo, Revo PRO and Simple Spin rotators, introduced in 2011, were designed with belt drive systems. The significant benefit of the belt drive in Rosco's new rotators series is that it is virtually silent, and fully 25% quieter than other rotators. An inherent difference with belt drive is a more consistent smooth rotation as the belt is constantly in contact.

■ RevoPRO™ Gobo Rotator

A dual programmable rotator which includes complete DMX controlled indexing features plus a stand-alone programmable mode that requires no DMX. Internal 100-240v mains power, so no PSU is required. Like all Rosco Revo rotators, it is built with a high temperature silicon belt drive, stepper motors, a unique threaded collar for easy installation of glass or steel gobos, friction lock for secure placement and dimmer control capability.

RevoPRO™ Gobo Rotator \$595.00
No. 205 64250 0000



■ SimpleSpin™ Dual Gobo Rotator

One stepper motor, two gobos, Rosco's SimpleSpin rotator is a variable speed device capable of rotating two gobos in opposing direction. A "set and forget" on-board speed control and direction switch is included, as is an internal universal power supply at 100-240v, 50/60hz. The device can also be controlled by connecting it to a dimmer. Like all Rosco Revo rotators, it is built with a high temperature silicon belt drive, a unique threaded collar for easy installation of glass or steel gobos and a friction lock for secure placement.

SimpleSpin™ Dual Gobo Rotator \$395.00
No. 205 63100 0000



■ REVO™ Dual Indexing Rotator

Two independent variable speed stepper motors with 8 or 16-bit indexing on both wheels provide maximum design flexibility. Like all Rosco Revo rotators, it is built with a high temperature silicon belt drive, stepper motors, a unique threaded collar for easy installation of glass or steel gobos, friction lock for secure placement and dimmer control capability.

REVO™ Dual Indexing Rotator \$495.00
No. 205 64200 0000



■ Revo Rotator Accessories

PSU-50 \$145.00
24v x 50 watt power supply
No. 205 71402 0050

PSU-200 \$799.00
24v x 200 watt power supply
No. 205 71402 0200

4 Pin Extension Cable - 25' \$57.00
No. 205 70002 0025

4 Pin Extension Cable - 50' \$65.00
No. 205 70002 0050

■ Vortex Gobo Rotator

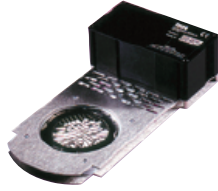
The sleek unit houses two carefully crafted drives. A single silent motor drives both assemblies. Even at full speed, the Vortex 360 Dual Rotator is so quiet it can be used anywhere in a theatre or venue. The Vortex 360 does not require any additional power supply. The transformer/plug that comes with it can be plugged directly into a wall outlet.



Vortex 360 Dual Rotator \$435.00
No. 205 83000 0000

■ Double Gobo Rotator

Rosco's Double Gobo Rotator allows you to achieve kinetic and often spectacular lighting effects by rotating two gobos in the same or opposite directions, at the same or varying speeds. This unit requires a controller or MFX Control Adaptor.



**Double Gobo Rotator
DC Vari-Speed, 0-9 RPM \$670.00**
No. 205 21000 0120

■ Double Gobo Rotator Accessories

DMX/DC Controller

The Rosco DMX/DC Controller provides power and speed control for the Double Gobo Rotator or other variable speed effects. It is intended for remote control via a DMX512 signal. The output circuitry of Rosco's DMX/DC Controller is identical to that of its four channel Variable Speed Controller. Speed, range, bi-directional drive, load compensation and output protection are all maintained.

DMX/DC Controller \$655.00
No. 205 45000 0120

Variable Speed Controller

This four channel Variable Speed Controller is designed to provide power, direction and speed control for variable speed rotator units on four independent channels. Output connections are made via four conductor cables terminating in two 4-pin XLR connectors.

Four Channel Controller \$600.00
No. 205 46000 0120

**Single MFX Control Adaptor
(forward control only) \$64.00**
No. 205 47000 0120

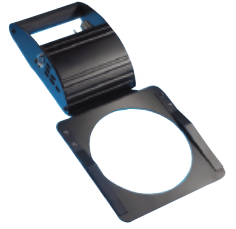
**Double MFX Control Adaptor
(offers control in opposing direction only) \$72.00**
No. 205 48000 0120

DC Splitter Cable \$48.00
No. 205 70001 0000

**Mounting Kit for DC/DMX Controller and
a Variable Speed Controller \$53.00**
No. 205 70003 0KIT

■ Infinity Gobo Animation Unit

The Infinity Gobo Animation Unit, which can be attached to virtually any spotlight, will accept an Infinity Disk. It is usually used with a steel or glass gobo in the gate to provide unusual kinetic effects. The Infinity is equipped with onboard control of the Infinity Disk speed and direction, as well as an on/off switch. Supplied with an adaptor plate and one Infinity Disk of your choice.



Infinity \$499.00
No. 205 82500 0000

■ Infinity Disks

Infinity disks are etched stainless steel disks powder coated to prevent reflection. Eleven designs are available. The disks are 16.5"(42cm) in diameter.

Infinity Disks \$99.00 each

- | | |
|--------------------------|---------------------------------|
| 30011 Tangential Breakup | 30017 Elliptical Breakup |
| 30012 Radial Breakup | 30018 Dot Breakup |
| 30013 Spiral Breakup | 30019 Flicker Breakup |
| 30014 Linear Breakup | 30020 Coarse Radial Breakup |
| 30015 Triangle Breakup | 30021 Coarse Tangential Breakup |
| 30016 Cloud Breakup | |



30011 TANGENTIAL BREAKUP



30012 RADIAL BREAKUP



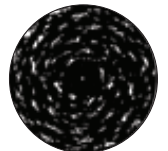
30013 SPIRAL BREAKUP



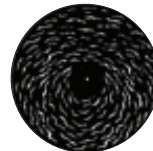
30014 LINEAR BREAKUP



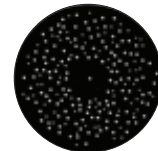
30015 TRIANGLE BREAKUP



30016 CLOUD BREAKUP



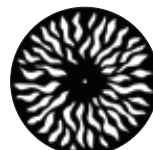
30017 ELLIPTICAL BREAKUP



30018 DOT BREAKUP



30019 FLICKER WHEEL



30020 COARSE RADIAL BREAKUP



30021 COARSE TANGENTIAL BREAKUP

■ X24 X-Effects Projector

This has become the projector of choice for shows or installations requiring a fire or water effect. It provides stunning rippling light effects previously unavailable to designers. The projector is available with on-board DMX for theatrical applications and in an analog version for retail, museum or architectural applications.



X24 DMX X-Effects - Black (lens sold separately) \$3,245.00

No. 205 37015 0120

X24 Analog X-Effects - Black (lens sold separately) \$2,849.00

No. 205 37020 0120

X24 DMX X-Effects - White (lens sold separately) \$3,245.00

No. 205 37025 0120

X24 Analog X-Effects - White (lens sold separately) \$2,849.00

No. 205 37030 0120

19 Degree Lens for X-Effects \$150.00

No. 205 37119 0000

30 Degree Lens for X-Effects \$150.00

No. 205 37130 0000

50 Degree Lens for X-Effects \$150.00

No. 205 37150 0000

70 Degree Lens for X-Effects \$150.00

No. 205 37170 0000

X24 Lamp – emARC SMR202/D1 \$355.00

No. 205 36101 0000

X24 DMX Complete \$3,395.00

X24 Analog Complete \$2,999.00

■ Power Supply Units

Rosco's power supplies are compatible with nearly all color scrollers, gobo rotators and other accessory devices in common use. The PSU-200 has four outputs and four returns. It can be pipe mounted with a C-Clamp or other hanging device. PSU-51 has a DMX passthrough.



PSU-200

PSU-200 \$799.00

No. 205 71402 0200

PSU-50 \$145.00

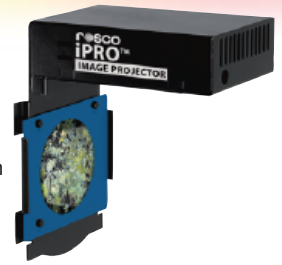
No. 205 71402 005

PSU-51 \$175.00

No. 205 71402 0051

■ iPro™ Image Projector

The iPro fits as an accessory into the iris slot of a typical ETC Source Four, Altman Shakespeare, Strand SL or Selecon Pacific light fixture. Fitted with an iPro Slide, the iPro™ delivers bright, visible full-color images that will last between 15 and 50 hours.



iPro Image Projector \$295.00

No. 265 25100 0120

■ iPro™ Slide Film

For use with the Rosco iPro, iPro Slide Film has been formulated from the ground up to produce the highest quality iPro Slide possible.



iPro Slide Film—10 sheet pack (LTR Size) \$33.00

No. 265 27995 0010

iPro Slide Film—25 sheet pack (LTR Size) \$67.50

No. 265 27995 0025

■ iPro Printing Pack

Contains 10 sheets of iPro Slide Film and 10 One-Time iPro Slide Mount \$225.00

No. 265 27985 0010

■ iPro™ One-Time Slide Mount

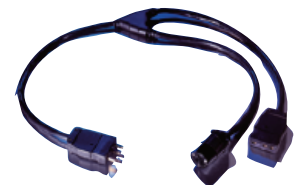
Contains the slide mount and protective film necessary to make an effective iPro Slide. Using your own transparency film and your own printer to create the image, you can then assemble a finished iPro Slide. *Transparency film not included.*

iPro Slide Mount \$29.00

No. 265 27999 0860

■ Hybrid Two-Fer

This accessory allows you to connect the iPro and your light fixture into the same dimmer. The two-fer is configured with a male stage-pin connector for the dimmer and both a female stage pin connector for the light and a female parallel blade connector for the iPro.



Hybrid Two-Fer \$54.95

No. 265 25500 0000

■ LitePad™ Loop

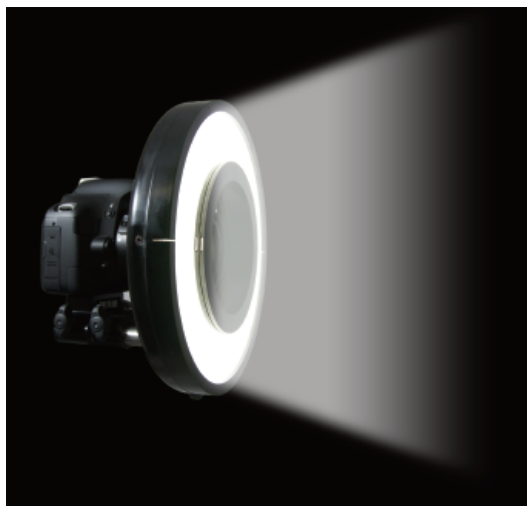
LitePad Loop™ is an innovative and unique approach to the ring light. Powered by the Rosco LitePad light engine, LitePad Loop is a soft, lightweight, and powerful ring light that can work with virtually any camera and lens system. The ingenious, two-part design allows for quick and easy attachment to the camera while its soft, diffused light is ideal for close up photography - the mode for which ring lights were designed.

LitePad Loop Retail Box \$699.00

No. 291 08875 0BOX

LitePad Loop Pro Kit \$1,099.00

No. 291 08875 0KIT



LitePad Loop Soft Beam



LitePad Loop retail box



LitePad Loop Kit

■ LitePad™ Loop Accessories

LitePad can be fashioned into virtually any two-dimensional shape or size; up to 48" x 96" in a single piece or tiled together for larger applications. Coupled with solution-based dimming and power distribution, LitePad provides a complete lighting solution for architectural, signage or decorative lighting projects.

LitePad Loop 4" L-Bracket Kit \$29.00

No. 291 60001 0014

LitePad Loop 8" Rods \$169.00

No. 291 20003 0208

LitePad Loop Color Filter Pack \$49.00

No. 291 20000 0008

LitePad Loop Light Masks \$49.00

No. 291 20000 1008

LitePad Loop AA Battery Kit \$49.00

No. 291 63651 0812

LitePad Loop Anton/Bauer Bracket with Cheeseplate \$225.00

No. 291 10305 0101

LitePad Loop V-Mount Bracket with Cheeseplate \$249.00

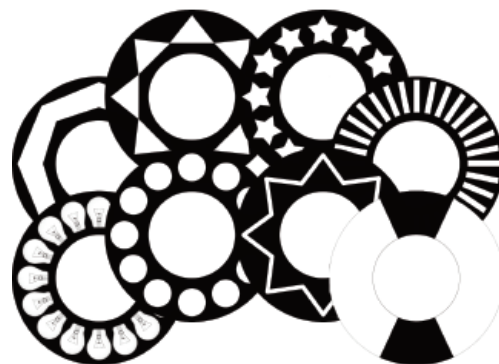
No. 291 10305 0102

LitePad Loop Light Stand Plate \$10.00

No. 291 60004 0002

Thumb Screw Replacements - 4 Pack \$18.00

No. 291 20002 1032



Light Masks



Battery Kit

■ LitePad Axiom

The LitePad Axiom range is a series of LED light sources designed specifically for filmmakers, videographers and photographers. The housing not only protects the light source, it also provides a universal mounting system. This allows the LitePad Axiom units to be affixed with brackets for C-Stands or mounted with Velcro or other conventional methods. Each product is available with either tungsten-level or daylight-level output and with or without a transformer.

LitePad Axiom Daylight

- LitePad Axiom 3" x 6" Daylight \$195.00**
No. 290 70306 0120
- LitePad Axiom 3" x 12" Daylight \$269.00**
No. 290 70312 0120
- LitePad Axiom 6" x 6" Daylight \$269.00**
No. 290 70606 0120
- LitePad Axiom 6" x 12" Daylight \$469.00**
No. 290 70612 0120
- LitePad Axiom 12" x 12" Daylight \$599.00**
No. 290 71212 0120
- LitePad Axiom 24" x 24" Daylight \$899.00**
No. 290 72424 0120

LitePad Axiom Tungsten

- LitePad Axiom 3" x 6" Tungsten \$195.00**
No. 290 80306 0120
- LitePad Axiom 3" x 12" Tungsten \$269.00**
No. 290 80312 0120
- LitePad Axiom 6" x 6" Tungsten \$269.00**
No. 290 80606 0120
- LitePad Axiom 6" x 12" Tungsten \$469.00**
No. 290 80612 0120
- LitePad Axiom 12" x 12" Tungsten \$599.00**
No. 290 81212 0120
- LitePad Axiom 24" x 24" Tungsten \$899.00**
No. 290 82424 0120



■ LitePad™ HO+

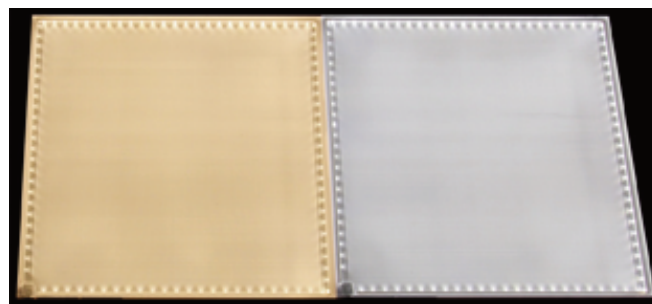
LitePad HO+ is a slim profile, edge-lit LED light source. At only 1/8" thick, LitePad HO+ produces a soft quality of light that is easy on the eyes and runs at cool temperatures. Available in eight standard sizes, in either tungsten-level or daylight-level outputs and with or without transformers.

LitePad HO+ Daylight

- LitePad 3" x 6" HO+ Daylight \$145.00**
No. 290 40306 0120
- LitePad 3" x 12" HO+ Daylight \$219.00**
No. 290 40312 0120
- LitePad 6" x 6" HO+ Daylight \$219.00**
No. 290 40606 0120
- LitePad 6" x 12" HO+ Daylight \$419.00**
No. 290 40612 0120
- LitePad 12" x 12" HO+ Daylight \$549.00**
No. 290 41212 0120
- LitePad 24" x 24" HO+ Daylight \$825.00**
No. 290 42424 0120
- LitePad 3" Circle HO+ Daylight \$89.00**
No. 290 40003 0120
- LitePad 12" Circle HO+ Daylight \$525.00**
No. 290 40012 0120

LitePad HO+ Tungsten

- LitePad 3" x 6" HO+ Tungsten \$145.00**
No. 290 50306 0120
- LitePad 3" x 12" HO+ Tungsten \$219.00**
No. 290 50312 0120
- LitePad 6" x 6" HO+ Tungsten \$219.00**
No. 290 50606 0120
- LitePad 6" x 12" HO+ Tungsten \$419.00**
No. 290 50612 0120
- LitePad 12" x 12" HO+ Tungsten \$549.00**
No. 290 51212 0120
- LitePad 24" x 24" HO+ Tungsten \$825.00**
No. 290 52424 0120
- LitePad 3" Circle HO+ Tungsten \$89.00**
No. 290 50003 0120
- LitePad 12" Circle HO+ Tungsten \$525.00**
No. 290 50012 0120
No. 290 10303 0120



LitePad HO+ is available in Tungsten and Daylight.

■ LitePad™ DL

LitePad DL is a slim profile (1/8") light source that delivers soft, even illumination in a sustainable, energy-efficient LED package, consuming about 40% less energy than LitePad HO+. LitePad DL was designed with event planners, theatrical lighting and architectural designers in mind, offering a more economical lighting solution for these professionals. Available in six standard sizes in daylight-level outputs and with or without transformers.

LitePad DL Daylight

LitePad 3" x 3" DL \$49.00

No. 290 10303 0120

LitePad 3" x 6" DL \$99.00

No. 290 10306 0120

LitePad 3" x 12" DL \$150.00

No. 290 10312 0120

LitePad 6" x 6" DL \$140.00

No. 290 10606 0120

LitePad 6" x 12" DL \$325.00

No. 290 10612 0120

LitePad 12" x 12" DL \$500.00

No. 290 11212 0120



■ Custom LitePad™

LitePad can be fashioned into virtually any two-dimensional shape or size; up to 48" x 96" in a single piece or tiled together for larger applications. Coupled with solution-based dimming and power distribution, LitePad provides a complete lighting distribution solution for architectural, signage or decorative lighting projects.



Rosco LitePads, plus decorative metal sheets and fabric cannage patterns, brought Dior an amazing building awning and façade.

■ LitePad™ Kits

Rosco offers four different kits for filmmakers, digital shooters and still photographers. Each of the four is available with a full complement of Axiom LitePads and the required accessories for focusing, mounting, and coloring. Kits can be specified with either daylight-level output LitePads or tungsten-level output. A fifth kit, the HO+ Everywhere Kit, is equipped with both tungsten and daylight level HO+ LitePads.

See the Rosco web site for details on what is in each kit.

LitePad Pro Gaffer's Kit AX: Daylight \$3,899.00

No. 290 240AXGKIT

LitePad Digital Shooters Kit AX: Daylight \$2,999.00

No. 290 2400DSKIT

LitePad Quick Kit AX: Daylight \$2,299.00

No. 290 240AXBKIT

LitePad Still Photo Kit AX: Daylight \$899.00

No. 290 2400SPKIT

LitePad Pro Gaffer's Kit AX: Tungsten \$3,899.00

No. 290 241AXGKIT

LitePad Digital Shooters Kit AX: Tungsten \$2,999.00

No. 290 2410DSKIT

LitePad Quick Kit AX: Tungsten \$2,299.00

290 241AXBKIT

LitePad Still Photo Kit AX: Tungsten \$899.00

290 2410SPKIT

LitePad HO+ Everywhere Lighting Kit \$3,599.00

No. 290 2400ELKIT



Digital Shooter LitePad Kit

■ LitePad™ Accessories

Accessories are generally included in the various LitePad kits, but they are also available individually.

LitePad 1 amp Transformer - US style \$15.00

No. 290 63501 0120

LitePad 3 amp Transformer \$20.00

No. 290 63503 0120

LitePad 5 amp Transformer \$30.00

No. 290 63505 0120

Car Adapter \$25.00

No. 290 63600 0000

Y Splitter \$20.00

No. 290 63700 0000

10 ft. Extension Cable \$15.00

No. 290 63750 0000

4-Way Sputer \$24.00

No. 290 63730 0000

AA Battery Holder \$20.00

No. 290 63651 0812

4-Pin Adapter Cable \$24.99

No. 290 63770 0012

Anton/Bauer Adapter \$44.99

No. 290 63790 0012

Right Angle 10' Extension Cable \$15.00

No. 290 63751 0000

LitePad 3" Mounting Bracket \$24.99

No. 290 63900 0003

LitePad 6" Mounting Bracket \$34.99

No. 290 63900 0006

LitePad 12" Mounting Bracket \$44.99

No. 290 63900 0012

LitePad 24" Mounting Bracket \$79.00

No. 290 63900 0024

1/4 – 20 Baby (5/8) Pin \$6.00

No. 290 63910 1420

LitePad Axiom 1/4 – 20 Bracket \$14.99

No. 290 63901 1420

LitePad Axiom Baby Pin Bracket \$19.95

No. 290 63901 0058

LitePad Axiom 5/8 Receiver Bracket \$44.99

No. 290 63901 0158

LitePad Axiom Wall Plate Bracket \$39.99

No. 290 63901 0304

LitePad Axiom Battery Holder (for AA Battery) \$14.99

No. 290 63901 8080

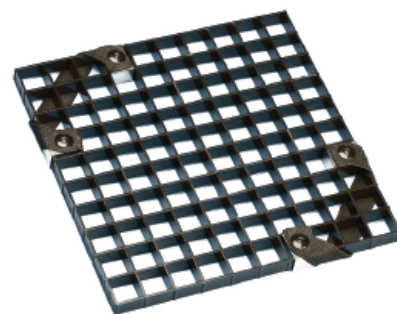


Car Adapter



Anton/Bauer Adapter

■ LitePad™ Accessories – continued



6" x 6" Eggcrate

3" x 6" Eggcrate \$14.99

No. 290 65000 0306

3" x 12" Eggcrate \$16.99

No. 290 65000 0312

6" x 6" Eggcrate \$16.99

No. 290 65000 0606

6" x 12" Eggcrate \$19.99

No. 290 65000 0612

12" x 12" Eggcrate \$39.99

No. 290 65000 1212

24" x 24" Eggcrate \$49.99

No. 290 65000 2424

Single Fader Dimmer \$125.00

No. 290 64000 0012

2CH/DMX Dimmer \$299.00

No. 290 64100 0012



LitePad Snake Arm

LitePad Light Stand \$75.00

No. 290 66104 9089

LitePad Snake Arm \$30.00

No. 290 66114 2002

LitePad Swivel Arm \$35.00

No. 290 66158 1420

LightPad Cold Shoe Attachment \$12.00

No. 290 66100 1420

■ LitePad™ Accessories – continued

- 3" Circle Medium Spot Lens \$12.00**
No. 290 67001 0003
- 3" x 6" Medium Spot Lens \$12.00**
No. 290 67001 0306
- 3" x 12" Medium Spot Lens \$15.00**
No. 290 67001 0312
- 6" x 6" Medium Spot Lens \$15.00**
No. 290 67001 0606
- 6" x 12" Medium Spot Lens \$25.00**
No. 290 67001 0612
- 12" x 12" Medium Spot Lens \$45.00**
No. 290 67001 1212
- 24" x 24" Medium Spot Lens \$125.00**
No. 290 67001 2424
- 12" Circle Medium Spot Lens \$50.00**
No. 290 67001 0012



Full Spot Lens

- 3" Circle Full Spot Lens \$22.00**
No. 290 67002 0003
- 3" x 6" Full Spot Lens \$22.00**
No. 290 67002 0306
- 3" x 12" Full Spot Lens \$29.00**
No. 290 67002 0312
- 6" x 6" Full Spot Lens \$29.00**
No. 290 67002 0606
- 6" x 12" Full Spot Lens \$49.00**
No. 290 67002 0612
- 12" x 12" Full Spot Lens \$89.00**
No. 290 67002 1212
- 24" x 24" Full Spot Lens \$249.00**
No. 290 67002 2424
- 12" Circle Full Spot Lens \$99.00**
No. 290 67002 0012

■ LitePad™ Accessories – continued

- Digital Shooter LitePad Case \$625.00**
No. 290 63860 0000
- Still Photo LitePad Case \$250.00**
No. 290 63870 0000
- Gaffer's AX LitePad Case \$625.00**
No. 290 63851 0000
- Quick AX LitePad Case \$550.00**
No. 290 63855 0000
- 24" x 24" LitePad Case \$249.00**
No. 290 63880 0000

- 3" x 6" Axiom Housing \$50.00**
No. 290 69999 0306
- 3" x 12" Axiom Housing \$50.00**
No. 290 69999 0312
- 6" x 6" Axiom Housing \$50.00**
No. 290 69999 0606
- 6" x 12" Axiom Housing \$50.00**
No. 290 69999 0612
- 12" x 12" Axiom Housing \$50.00**
No. 290 69999 1212
- 24" x 24" Axiom Housing \$74.00**
No. 290 69999 2424



Swivel Arm

■ Miro Cubes™

Miro Cubes™ are innovative LED wash lights which, drawing just 48 watts, produce up to 3100 lumens of light from a luminaire that is 4 inches wide, 4 inches deep and 4 inches high.

■ Miro Cube WNC

This 4" luminaire provides 3100 lumens of bright, tunable white light. Output can be adjusted from 2800K to 6500K, for film/TV, theatrical or architectural applications.

Black housing \$875.00

No. 515 90050 1020

White housing \$875.00

No. 515 90050 2020



■ Miro Cube 4C

Using RGB+W color mixing, this wash light offers a true white, plus a palette of saturated mid-tone and pale tint colors which can be dialed in at the touch of a button.

Black housing \$875.00

No. 515 90050 1014

White housing \$875.00

No. 515 90050 2014



■ Miro Cube UV

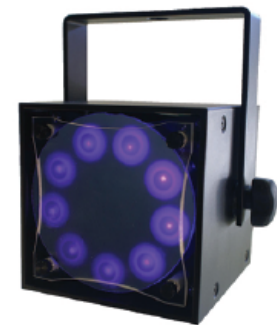
The smallest, most affordable high powered UV light available to lighting professionals. The LED emitters have a 20,000 hour life assuring a virtually maintenance-free installation. The luminaire outperforms conventional long throw fixtures in virtually every category and offers full range dimming for the first time in a UV source.

Black housing \$1,475.00

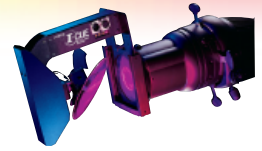
No. 515 90050 1075

White housing \$1,475.00

No. 515 90050 2075



■ I-Cue Intelligent Mirror



A spotlight attachment to re-position a beam of light. This allows a single spotlight in a fixed position to be used for multiple specials in dozens of locations.

Onboard DMX is included. A Power Supply Unit is necessary to get 24v DC to the I-Cue.

I-Cue \$695.00

No. 205 81000 0120

■ DMX Iris

Having complete control over the beam spread of your leko just got easier. The new Rosco DMX Iris is quiet, dependable, affordable, and a perfect complement to the I-Cue Moving Mirror. This 24 leaf motorized iris unit can be used with your ETC Source Four, Selecon Pacific or most other modern lekos. Unlike other iris units that have only 18 or fewer leaves in the aperture, the



Rosco DMX Iris creates an even edged, perfectly round aperture all the way down to its smallest diameter. Using 1 channel of DMX512, the DMX Iris's movement is smooth even along very slow cross fades. A microprocessor controlled stepper motor connects to the mechanical arm of the iris unit, replacing the unreliable noisy chain drive system found in other products. A manual knob lets you use the DMX Iris without DMX control just by dialing in the aperture size you want, just as you would a conventional iris unit. The Rosco DMX Iris requires a non-dim circuit and is auto-sensing from 100-240 volts for use anywhere in the world. No costly external PSU is needed.

DMX Iris \$495.00

No. 205 74500 0000

■ LitePad™ Loop

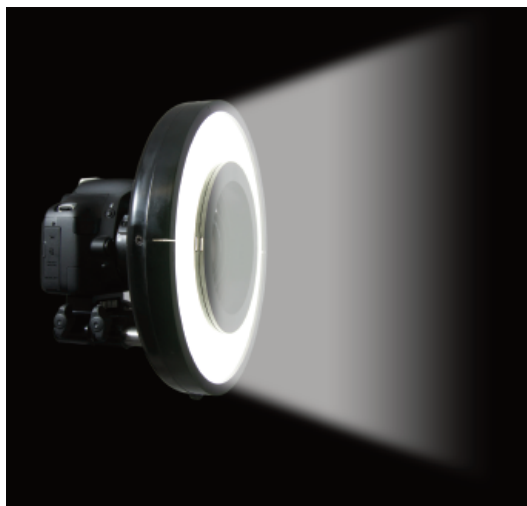
LitePad Loop™ is an innovative and unique approach to the ring light. Powered by the Rosco LitePad light engine, LitePad Loop is a soft, lightweight, and powerful ring light that can work with virtually any camera and lens system. The ingenious, two-part design allows for quick and easy attachment to the camera while its soft, diffused light is ideal for close up photography - the mode for which ring lights were designed.

LitePad Loop Retail Box \$699.00

No. 291 08875 0BOX

LitePad Loop Pro Kit \$1,099.00

No. 291 08875 0KIT



LitePad Loop Soft Beam



LitePad Loop retail box



LitePad Kit

■ LitePad™ Loop Accessories

LitePad can be fashioned into virtually any two-dimensional shape or size; up to 48" x 96" in a single piece or tiled together for larger applications. Coupled with solution-based dimming and power distribution, LitePad provides a complete lighting solution for architectural, signage or decorative lighting projects.

LitePad Loop 4" L-Bracket Kit \$29.00

No. 291 60001 0014

LitePad Loop 8" Rods \$169.00

No. 291 20003 0208

LitePad Loop Color Filter Pack \$49.00

No. 291 20000 0008

LitePad Loop Light Masks \$49.00

No. 291 20000 1008

LitePad Loop AA Battery Kit \$49.00

No. 291 63651 0812

LitePad Loop Anton/Bauer Bracket with Cheeseplate \$225.00

No. 291 10305 0101

LitePad Loop V-Mount Bracket with Cheeseplate \$249.00

No. 291 10305 0102

LitePad Loop Light Stand Plate \$10.00

No. 291 60004 0002

Thumb Screw Replacements - 4 Pack \$18.00

No. 291 20002 1032



Light Masks



Battery Kit

■ LitePad Axiom

The LitePad Axiom range is a series of LED light sources designed specifically for filmmakers, videographers and photographers. The housing not only protects the light source, it also provides a universal mounting system. This allows the LitePad Axiom units to be affixed with brackets for C-Stands or mounted with Velcro or other conventional methods. Each product is available with either tungsten-level or daylight-level output and with or without a transformer.

LitePad Axiom Daylight

LitePad Axiom 3" x 6" Daylight \$195.00

No. 290 70306 0120

LitePad Axiom 3" x 12" Daylight \$269.00

No. 290 70312 0120

LitePad Axiom 6" x 6" Daylight \$269.00

No. 290 70606 0120

LitePad Axiom 6" x 12" Daylight \$469.00

No. 290 70612 0120

LitePad Axiom 12" x 12" Daylight \$599.00

No. 290 71212 0120

LitePad Axiom 24" x 24" Daylight \$899.00

No. 290 72424 0120

LitePad Axiom Tungsten

LitePad Axiom 3" x 6" Tungsten \$195.00

No. 290 80306 0120

LitePad Axiom 3" x 12" Tungsten \$269.00

No. 290 80312 0120

LitePad Axiom 6" x 6" Tungsten \$269.00

No. 290 80606 0120

LitePad Axiom 6" x 12" Tungsten \$469.00

No. 290 80612 0120

LitePad Axiom 12" x 12" Tungsten \$599.00

No. 290 81212 0120

LitePad Axiom 24" x 24" Tungsten \$899.00

No. 290 82424 0120



■ LitePad™ HO+

LitePad HO+ is a slim profile, edge-lit LED light source. At only 1/8" thick, LitePad HO+ produces a soft quality of light that is easy on the eyes and runs at cool temperatures. Available in eight standard sizes, in either tungsten-level or daylight-level outputs and with or without transformers.

LitePad HO+ Daylight

LitePad 3" x 6" HO+ Daylight \$145.00

No. 290 40306 0120

LitePad 3" x 12" HO+ Daylight \$219.00

No. 290 40312 0120

LitePad 6" x 6" HO+ Daylight \$219.00

No. 290 40606 0120

LitePad 6" x 12" HO+ Daylight \$419.00

No. 290 40612 0120

LitePad 12" x 12" HO+ Daylight \$549.00

No. 290 41212 0120

LitePad 24" x 24" HO+ Daylight \$825.00

No. 290 42424 0120

LitePad 3" Circle HO+ Daylight \$89.00

No. 290 40003 0120

LitePad 12" Circle HO+ Daylight \$525.00

No. 290 40012 0120

LitePad HO+ Tungsten

LitePad 3" x 6" HO+ Tungsten \$145.00

No. 290 50306 0120

LitePad 3" x 12" HO+ Tungsten \$219.00

No. 290 50312 0120

LitePad 6" x 6" HO+ Tungsten \$219.00

No. 290 50606 0120

LitePad 6" x 12" HO+ Tungsten \$419.00

No. 290 50612 0120

LitePad 12" x 12" HO+ Tungsten \$549.00

No. 290 51212 0120

LitePad 24" x 24" HO+ Tungsten \$825.00

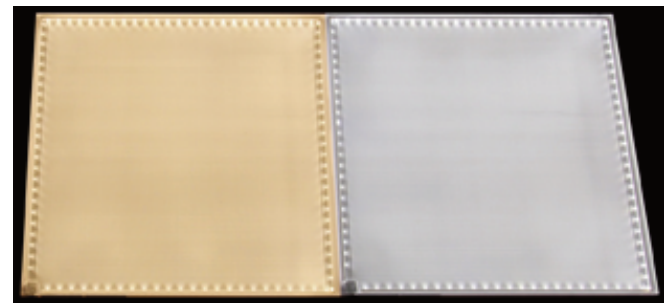
No. 290 52424 0120

LitePad 3" Circle HO+ Tungsten \$89.00

No. 290 50003 0120

LitePad 12" Circle HO+ Tungsten \$525.00

No. 290 50012 0120



LitePad HO+ is available in Tungsten and Daylight.

■ LitePad™ DL

LitePad DL is a slim profile (1/8") light source that delivers soft, even illumination in a sustainable, energy-efficient LED package, consuming about 40% less energy than LitePad HO+. LitePad DL was designed with event planners, theatrical lighting and architectural designers in mind, offering a more economical lighting solution for these professionals. Available in six standard sizes in daylight-level outputs and with or without transformers.

LitePad DL Daylight

LitePad 3" x 3" DL \$49.00

No. 290 10303 0120

LitePad 3" x 6" DL \$99.00

No. 290 10306 0120

LitePad 3" x 12" DL \$150.00

No. 290 10312 0120

LitePad 6" x 6" DL \$140.00

No. 290 10606 0120

LitePad 6" x 12" DL \$325.00

No. 290 10612 0120

LitePad 12" x 12" DL \$500.00

No. 290 11212 0120



■ Custom LitePad™

LitePad can be fashioned into virtually any two-dimensional shape or size; up to 48" x 96" in a single piece or tiled together for larger applications. Coupled with solution-based dimming and power distribution, LitePad provides a complete lighting solution for architectural, signage or decorative lighting projects.



■ LitePad™ Kits

Rosco offers four different kits for filmmakers, digital shooters and still photographers. Each of the four is available with a full complement of Axiom LitePads and the required accessories for focusing, mounting, and coloring. Kits can be specified with either daylight-level output LitePads or tungsten-level output. A fifth kit, the HO+ Everywhere Kit, is equipped with both tungsten and daylight level HO+ LitePads.

See the Rosco web site for details on what is in each kit.

LitePad Pro Gaffer's Kit AX: Daylight \$3,899.00

No. 290 240AXGKIT

LitePad Digital Shooters Kit AX: Daylight \$2,999.00

No. 290 2400DSKIT

LitePad Quick Kit AX: Daylight \$2,299.00

No. 290 240AXBKIT

LitePad Still Photo Kit AX: Daylight \$899.00

No. 290 2400SPKIT

LitePad Pro Gaffer's Kit AX: Tungsten \$3,899.00

No. 290 241AXGKIT

LitePad Digital Shooters Kit AX: Tungsten \$2,999.00

No. 290 2410DSKIT

LitePad Quick Kit AX: Tungsten \$2,299.00

290 241AXBKIT

LitePad Still Photo Kit AX: Tungsten \$899.00

290 2410SPKIT

LitePad HO+ Everywhere Lighting Kit \$3,599.00

No. 290 2400ELKIT



Digital Shooter LitePad Kit

■ LitePad™ Accessories

Accessories are generally included in the various LitePad kits, but they are also available individually.

LitePad 1 amp Transformer - US style \$15.00

No. 290 63501 0120

LitePad 3 amp Transformer \$20.00

No. 290 63503 0120

LitePad 5 amp Transformer \$30.00

No. 290 63505 0120

Car Adapter \$25.00

No. 290 63600 0000

Y Splitter \$20.00

No. 290 63700 0000

10 ft. Extension Cable \$15.00

No. 290 63750 0000

4-Way Sputter \$24.00

No. 290 63730 0000

AA Battery Holder \$20.00

No. 290 63651 0812

4-Pin Adapter Cable \$24.99

No. 290 63770 0012

Anton/Bauer Adapter \$44.99

No. 290 63790 0012

Right Angle 10' Extension Cable \$15.00

No. 290 63751 0000

LitePad 3" Mounting Bracket \$24.99

No. 290 63900 0003

LitePad 6" Mounting Bracket \$34.99

No. 290 63900 0006

LitePad 12" Mounting Bracket \$44.99

No. 290 63900 0012

LitePad 24" Mounting Bracket \$79.00

No. 290 63900 0024

1/4 – 20 Baby (5/8) Pin \$6.00

No. 290 63910 1420

LitePad Axiom 1/4 – 20 Bracket \$14.99

No. 290 63901 1420

LitePad Axiom Baby Pin Bracket \$19.95

No. 290 63901 0058

LitePad Axiom 5/8 Receiver Bracket \$44.99

No. 290 63901 0158

LitePad Axiom Wall Plate Bracket \$39.99

No. 290 63901 0304

LitePad Axiom Battery Holder (for AA Battery) \$14.99

No. 290 63901 8080

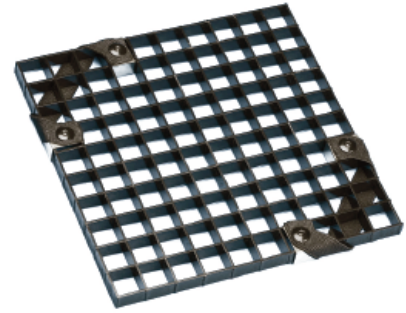


Car Adapter



Anton/Bauer Adapter

■ LitePad™ Accessories – continued



6" x 6" Eggcrate

3" x 6" Eggcrate \$14.99

No. 290 65000 0306

3" x 12" Eggcrate \$16.99

No. 290 65000 0312

6" x 6" Eggcrate \$16.99

No. 290 65000 0606

6" x 12" Eggcrate \$19.99

No. 290 65000 0612

12" x 12" Eggcrate \$39.99

No. 290 65000 1212

24" x 24" Eggcrate \$49.99

No. 290 65000 2424

Single Fader Dimmer \$125.00

No. 290 64000 0012

2CH/DMX Dimmer \$299.00

No. 290 64100 0012



LitePad Snake Arm

LitePad Light Stand \$75.00

No. 290 66104 9089

LitePad Snake Arm \$30.00

No. 290 66114 2002

LitePad Swivel Arm \$35.00

No. 290 66158 1420

LightPad Cold Shoe Attachment \$12.00

No. 290 66100 1420

■ LitePad™ Accessories – continued

- 3" Circle Medium Spot Lens \$12.00**
No. 290 67001 0003
- 3" x 6" Medium Spot Lens \$12.00**
No. 290 67001 0306
- 3" x 12" Medium Spot Lens \$15.00**
No. 290 67001 0312
- 6" x 6" Medium Spot Lens \$15.00**
No. 290 67001 0606
- 6" x 12" Medium Spot Lens \$25.00**
No. 290 67001 0612
- 12" x 12" Medium Spot Lens \$45.00**
No. 290 67001 1212
- 24" x 24" Medium Spot Lens \$125.00**
No. 290 67001 2424
- 12" Circle Medium Spot Lens \$50.00**
No. 290 67001 0012



Full Spot Lens

- 3" Circle Full Spot Lens \$22.00**
No. 290 67002 0003
- 3" x 6" Full Spot Lens \$22.00**
No. 290 67002 0306
- 3" x 12" Full Spot Lens \$29.00**
No. 290 67002 0312
- 6" x 6" Full Spot Lens \$29.00**
No. 290 67002 0606
- 6" x 12" Full Spot Lens \$49.00**
No. 290 67002 0612
- 12" x 12" Full Spot Lens \$89.00**
No. 290 67002 1212
- 24" x 24" Full Spot Lens \$249.00**
No. 290 67002 2424
- 12" Circle Full Spot Lens \$99.00**
No. 290 67002 0012

■ LitePad™ Accessories – continued

- Digital Shooter LitePad Case \$625.00**
No. 290 63860 0000
- Still Photo LitePad Case \$250.00**
No. 290 63870 0000
- Gaffer's AX LitePad Case \$625.00**
No. 290 63851 0000
- Quick AX LitePad Case \$550.00**
No. 290 63855 0000
- 24" x 24" LitePad Case \$249.00**
No. 290 63880 0000

- 3" x 6" Axiom Housing \$50.00**
No. 290 69999 0306
- 3" x 12" Axiom Housing \$50.00**
No. 290 69999 0312
- 6" x 6" Axiom Housing \$50.00**
No. 290 69999 0606
- 6" x 12" Axiom Housing \$50.00**
No. 290 69999 0612
- 12" x 12" Axiom Housing \$50.00**
No. 290 69999 1212
- 24" x 24" Axiom Housing \$74.00**
No. 290 69999 2424



Swivel Arm

Belts vs. Gears:

The Vortex 360 and the Double Gobo Rotator, shown on the next page, use precision machined metal gears as the drive mechanism. From the motor shaft to the gobo wheel, each point of contact in the drive assembly is gear to gear. The advantages are as obvious now as they were nearly twenty years ago when these products were first designed—rock solid reliable movement and a durable, low maintenance mechanism.

The Revo, Revo PRO and Simple Spin rotators, introduced in 2011, were designed with belt drive systems. The significant benefit of the belt drive in Rosco's new rotators series is that it is virtually silent, and fully 25% quieter than other rotators. An inherent difference with belt drive is a more consistent smooth rotation as the belt is constantly in contact.

■ RevoPRO™ Gobo Rotator

A dual programmable rotator which includes complete DMX controlled indexing features plus a stand-alone programmable mode that requires no DMX. Internal 100-240v mains power, so no PSU is required. Like all Rosco Revo rotators, it is built with a high temperature silicon belt drive, stepper motors, a unique threaded collar for easy installation of glass or steel gobos, friction lock for secure placement and dimmer control capability.

RevoPRO™ Gobo Rotator \$595.00

No. 205 64250 0000



■ SimpleSpin™ Dual Gobo Rotator

One stepper motor, two gobos, Rosco's SimpleSpin rotator is a variable speed device capable of rotating two gobos in opposing direction. A "set and forget" on-board speed control and direction switch is included, as is an internal universal power supply at 100-240v, 50/60hz. The device can also be controlled by connecting it to a dimmer. Like all Rosco Revo rotators, it is built with a high temperature silicon belt drive, a unique threaded collar for easy installation of glass or steel gobos and a friction lock for secure placement.

SimpleSpin™ Dual Gobo Rotator \$395.00

No. 205 63100 0000



■ REVO™ Dual Indexing Rotator

Two independent variable speed stepper motors with 8 or 16-bit indexing on both wheels provide maximum design flexibility. Like all Rosco Revo rotators, it is built with a high temperature silicon belt drive, stepper motors, a unique threaded collar for easy installation of glass or steel gobos, friction lock for secure placement and dimmer control capability.

REVO™ Dual Indexing Rotator \$495.00

No. 205 64200 0000



■ Revo Rotator Accessories

PSU-50 \$145.00

24v x 50 watt power supply
No. 205 71402 0050

PSU-200 \$799.00

24v x 200 watt power supply
No. 205 71402 0200

4 Pin Extension Cable - 25' \$57.00

No. 205 70002 0025

4 Pin Extension Cable - 50' \$65.00

No. 205 70002 0050

■ Vortex Gobo Rotator

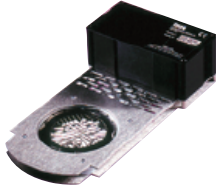
The sleek unit houses two carefully crafted drives. A single silent motor drives both assemblies. Even at full speed, the Vortex 360 Dual Rotator is so quiet it can be used anywhere in a theatre or venue. The Vortex 360 does not require any additional power supply. The transformer/plug that comes with it can be plugged directly into a wall outlet.



Vortex 360 Dual Rotator \$435.00
No. 205 83000 0000

■ Double Gobo Rotator

Rosco's Double Gobo Rotator allows you to achieve kinetic and often spectacular lighting effects by rotating two gobos in the same or opposite directions, at the same or varying speeds. This unit requires a controller or MFX Control Adaptor.



**Double Gobo Rotator
DC Vari-Speed, 0-9 RPM \$670.00**
No. 205 21000 0120

■ Double Gobo Rotator Accessories

DMX/DC Controller

The Rosco DMX/DC Controller provides power and speed control for the Double Gobo Rotator or other variable speed effects. It is intended for remote control via a DMX512 signal. The output circuitry of Rosco's DMX/DC Controller is identical to that of its four channel Variable Speed Controller. Speed, range, bi-directional drive, load compensation and output protection are all maintained.

DMX/DC Controller \$655.00
No. 205 45000 0120

Variable Speed Controller

This four channel Variable Speed Controller is designed to provide power, direction and speed control for variable speed rotator units on four independent channels. Output connections are made via four conductor cables terminating in two 4-pin XLR connectors.

Four Channel Controller \$600.00
No. 205 46000 0120

**Single MFX Control Adaptor
(forward control only) \$64.00**
No. 205 47000 0120

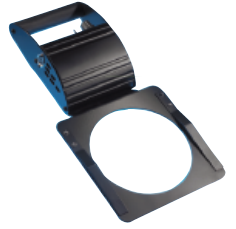
**Double MFX Control Adaptor
(offers control in opposing direction only) \$72.00**
No. 205 48000 0120

DC Splitter Cable \$48.00
No. 205 70001 0000

**Mounting Kit for DC/DMX Controller and
a Variable Speed Controller \$53.00**
No. 205 70003 0KIT

■ Infinity Gobo Animation Unit

The Infinity Gobo Animation Unit, which can be attached to virtually any spotlight, will accept an Infinity Disk. It is usually used with a steel or glass gobo in the gate to provide unusual kinetic effects. The Infinity is equipped with onboard control of the Infinity Disk speed and direction, as well as an on/off switch. Supplied with an adaptor plate and one Infinity Disk of your choice.



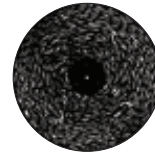
Infinity \$499.00
No. 205 82500 0000

■ Infinity Disks

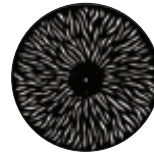
Infinity disks are etched stainless steel disks powder coated to prevent reflection. Eleven designs are available. The disks are 16.5"(42cm) in diameter.

Infinity Disks \$99.00 each

- | | |
|--------------------------|---------------------------------|
| 30011 Tangential Breakup | 30017 Elliptical Breakup |
| 30012 Radial Breakup | 30018 Dot Breakup |
| 30013 Spiral Breakup | 30019 Flicker Breakup |
| 30014 Linear Breakup | 30020 Coarse Radial Breakup |
| 30015 Triangle Breakup | 30021 Coarse Tangential Breakup |
| 30016 Cloud Breakup | |



30011
TANGENTIAL BREAKUP



30012
RADIAL BREAKUP



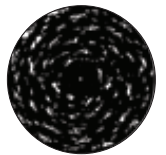
30013
SPIRAL BREAKUP



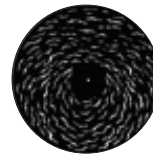
30014
LINEAR BREAKUP



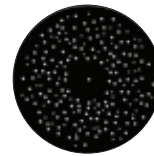
30015
TRIANGLE BREAKUP



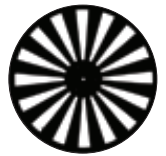
30016
CLOUD BREAKUP



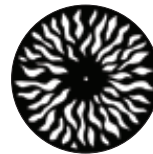
30017
ELLIPTICAL BREAKUP



30018
DOT BREAKUP



30019
FLICKER WHEEL



30020
COARSE RADIAL
BREAKUP



30021
COARSE TANGENTIAL
BREAKUP

■ X24 X-Effects Projector

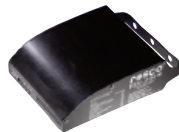
This has become the projector of choice for shows or installations requiring a fire or water effect. It provides stunning rippling light effects previously unavailable to designers. The projector is available with on-board DMX for theatrical applications and in an analog version for retail, museum or architectural applications.



- X24 DMX X-Effects - Black (lens sold separately) \$3,245.00**
No. 205 37015 0120
- X24 Analog X-Effects - Black (lens sold separately) \$2,849.00**
No. 205 37020 0120
- X24 DMX X-Effects - White (lens sold separately) \$3,245.00**
No. 205 37025 0120
- X24 Analog X-Effects - White (lens sold separately) \$2,849.00**
No. 205 37030 0120
- 19 Degree Lens for X-Effects \$150.00**
No. 205 37119 0000
- 30 Degree Lens for X-Effects \$150.00**
No. 205 37130 0000
- 50 Degree Lens for X-Effects \$150.00**
No. 205 37150 0000
- 70 Degree Lens for X-Effects \$150.00**
No. 205 37170 0000
- X24 Lamp – emARC SMR202/D1 \$355.00**
No. 205 36101 0000
- X24 DMX Complete \$3,395.00**
- X24 Analog Complete \$2,999.00**

■ Power Supply Units

Rosco's power supplies are compatible with nearly all color scrollers, gobo rotators and other accessory devices in common use. The PSU-200 has four outputs and four returns. It can be pipe mounted with a C-Clamp or other hanging device. PSU-51 has a DMX passthrough.

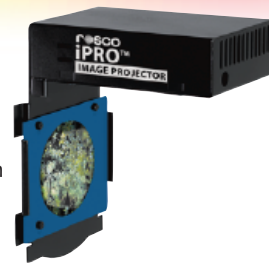


PSU-200

- PSU-200 \$799.00**
No. 205 71402 0200
- PSU-50 \$145.00**
No. 205 71402 005
- PSU-51 \$175.00**
No. 205 71402 0051

■ iPro™ Image Projector

The iPro fits as an accessory into the iris slot of a typical ETC Source Four, Altman Shakespeare, Strand SL or Selecon Pacific light fixture. Fitted with an iPro Slide, the iPro™ delivers bright, visible full-color images that will last between 15 and 50 hours.



- iPro Image Projector \$295.00**
No. 265 25100 0120

■ iPro™ Slide Film

For use with the Rosco iPro, iPro Slide Film has been formulated from the ground up to produce the highest quality iPro Slide possible.



- iPro Slide Film—10 sheet pack (LTR Size) \$33.00**
No. 265 27995 0010
- iPro Slide Film—25 sheet pack (LTR Size) \$67.50**
No. 265 27995 0025

■ iPro Printing Pack

Contains 10 sheets of iPro Slide Film and 10 One-Time iPro Slide Mount \$225.00
No. 265 27985 0010

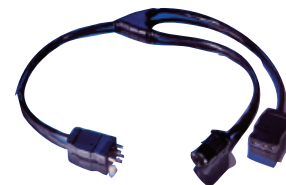
■ iPro™ One-Time Slide Mount

Contains the slide mount and protective film necessary to make an effective iPro Slide. Using your own transparency film and your own printer to create the image, you can then assemble a finished iPro Slide. *Transparency film not included.*

- iPro Slide Mount \$29.00**
No. 265 27999 0860

■ Hybrid Two-Fer

This accessory allows you to connect the iPro and your light fixture into the same dimmer. The two-fer is configured with a male stage-pin connector for the dimmer and both a female stage pin connector for the light and a female parallel blade connector for the iPro.



- Hybrid Two-Fer \$54.95**
No. 265 25500 0000

■ Off Broadway™

A vinyl acrylic paint which may be used on a wide variety of scenic materials including hard scenery, foam scenery, drops and ground cloths.



NEW!

	5 Gallon	Gallon	Quart	
White	\$154.65	\$33.60	\$14.15	No. 150 05350
White White	181.50	40.35	13.20	No. 150 05351
Black	168.00	37.65	13.20	No. 150 05352
Yellow Ochre		37.65	13.20	No. 150 05353
Burnt Umber		37.65	13.20	No. 150 05354
Raw Sienna		37.65	13.20	No. 150 05355
Burnt Sienna		37.65	13.20	No. 150 05356
Raw Umber		37.65	13.20	No. 150 05357
Earth Umber		37.65	13.20	No. 150 05358
Ultramarine Blue		53.70	18.80	No. 150 05359
Fire Red		61.05	21.35	No. 150 05360
Deep Red		60.60	21.20	No. 150 05361
Orange		47.25	16.55	No. 150 05363
Emerald Green		47.25	16.55	No. 150 05364
Chrome Oxide Green		47.25	16.55	No. 150 05365
Lemon Yellow		47.25	16.55	No. 150 05366
Golden Yellow		47.25	16.55	No. 150 05367
Purple		60.60	21.20	No. 150 05368
Magenta		60.60	21.20	No. 150 05369
Pthalo Green		47.25	16.55	No. 150 05371
Sky Blue		47.25	16.55	No. 150 05372
Pthalo Blue		47.25	16.55	No. 150 05373
Imperial Green		64.05	22.45	No. 150 05374
* Navy		60.60	21.20	No. 150 05375
Brilliant Red		64.05	22.45	No. 150 05376
* Van Dyke Brown		47.25	16.55	No. 150 05380
Paynes Grey		64.05	22.45	No. 150 05382

* New

Product numbers refer to color only. Add 0640 to the product number for Five Gallons, 0128 for One Gallon, 0032 for One Quart and 0016 for One Pint.

Metallic Colors

	Gallon	Quart	Pint	
Bright Gold	\$96.75	\$33.60	\$21.60	No. 150 05383
Gold	96.75	33.60	21.60	No. 150 05384
Silver	96.75	33.60	21.60	No. 150 05385
Copper	96.75	33.60	21.60	No. 150 05386
Antique Gold	96.75	33.60	21.60	No. 150 05387

Approximate Paint Weights:

- Pint = 1.5 lbs./1 kilogram
- Quart = 2.75 lbs./1.5 kilograms
- Gallon = 11 lbs./5 kilograms
- 5 Gallon = 60 lbs./27 kilograms

■ Iddings Deep Colors™

Flexible casein binder with substantial quantities of ground pigment for rich, ultra-matte colors with excellent adhesion to absorbent materials.



	5 Gallon	Gallon	Quart	
White	\$212.40	\$47.25	\$16.20	No. 150 05551
Black	241.80	53.70	18.90	No. 150 05552
Yellow Ochre		53.70	18.90	No. 150 05553
Burnt Umber		53.70	18.90	No. 150 05554
Raw Sienna		53.70	18.90	No. 150 05555
Burnt Sienna		53.70	18.90	No. 150 05556
Raw Umber		53.70	18.90	No. 150 05557
Van Dyke Brown		53.70	18.90	No. 150 05558
Ultramarine Blue		67.35	24.30	No. 150 05559
Red		67.35	24.30	No. 150 05560
Dark Red		87.60	27.00	No. 150 05561
Bright Red		87.60	27.00	No. 150 05562
Orange		87.60	27.00	No. 150 05563
Emerald Green		67.35	24.30	No. 150 05564
Chrome Oxide Green		67.35	24.30	No. 150 05565
Lemon Yellow		87.60	27.00	No. 150 05566
Golden Yellow		87.60	27.00	No. 150 05567
Purple		87.60	27.00	No. 150 05568
Magenta		87.60	27.00	No. 150 05569
Turquoise Blue		67.35	24.30	No. 150 05570
Dark Green		67.35	24.30	No. 150 05571
Cerulean Blue		67.35	24.30	No. 150 05572
Navy Blue		67.35	24.30	No. 150 05573

Product numbers refer to color only. Add 0640 to the product number for Five Gallons, 0128 for One Gallon and 0032 for One Quart.

■ Paint Sample Kits

Off Broadway Paint Kit \$71.70

No. 150 05300 OKIT
29-piece kit contains one ounce samples of each Off Broadway color plus Clear Flat and Clear Gloss.

Deep Colors Paint Kit \$73.35

No. 150 05500 OKIT
23-piece kit contains one ounce samples.

Supersaturated Paint Kit \$71.70

No. 150 05900 OKIT
31-piece kit contains one ounce samples (neutral base not included).

Fluorescent Paint Kit \$49.05

No. 150 05700 OKIT
9-piece kit contains one ounce samples.

VividFX Sample Kit \$60.90

No. 150 06200 OKIT
13-piece kit contains one ounce samples.

■ **Supersaturated Roscopaint™**

Brilliant dye-like colors formulated to be diluted with substantial quantities of water while retaining binder strength. Flexible vinyl acrylic binder. Adheres to most scenic surfaces, including muslin, plastics and metal.



	Quart	
Red	\$36.30	No. 150 05965
Green Shade Blue	36.30	No. 150 05968
Ultramarine Blue	36.30	No. 150 05969
Chrome Green	36.30	No. 150 05971
Emerald Green	36.30	No. 150 05972
Pthalo Green	36.30	No. 150 05973
Imperial Green	36.30	No. 150 05974
Magenta	36.30	No. 150 05975
Brilliant Red	39.90	No. 150 05976
Spectrum Red	36.30	No. 150 05977
Purple	36.30	No. 150 05979
Iron Red	24.30	No. 150 05980
Chrome Yellow	36.30	No. 150 05981
Yellow Ochre	24.30	No. 150 05982
Raw Sienna	24.30	No. 150 05983
Moly Orange	36.30	No. 150 05984
Burnt Umber	24.30	No. 150 05985
Raw Umber	24.30	No. 150 05986
Burnt Sienna	24.30	No. 150 05987
Lemon Yellow	36.30	No. 150 05988
Turquoise Blue	36.30	No. 150 05989
Prussian Blue	33.60	No. 150 05990
Navy Blue	33.60	No. 150 05991
Paynes Grey	36.30	No. 150 05992
Leather Lake	24.30	No. 150 05993
Grass Green	33.60	No. 150 05994
Cerulean Blue	33.60	No. 150 05996
Hunter Green	33.60	No. 150 05997
Van Dyke Brown	24.30	No. 150 05998

Product numbers refer to color only.
Add 0032 to product number for One Quart.

■ **Supersaturated Concentrated Bases™**

	5 Gal.	Gal.	Qt.	
Neutral Base		\$40.35	N/A	No. 150 06001
White	\$212.55	45.90	N/A	No. 150 06002
Velour Black	254.10	57.90	\$20.25	No. 150 06003

Product numbers refer to color only.
Add 0640 to the product number for Five Gallons,
0128 for One Gallon, and 0032 for One Quart.

■ **Acrylic Glazes**

Designed to be diluted with water and applied as an overcoat to a painted surface. They can also be mixed with the paints for additional binder strength.

	5 Gallon	Gallon	
Clear Gloss	\$194.85	\$43.20	No. 150 05580
Clear Flat	194.85	43.20	No. 150 05581

Add 0640 to the product number for Five Gallons,
0128 for One Gallon.

■ **ColorCoat™**

Fast drying water borne acrylic enamel. Good choice for decks and floors due to its high abrasion resistance.

	Gallon	Quart	
Clear	\$51.30	\$16.20	No. 150 05620
Clear Satin	51.30	16.20	No. 150 05621
Black	56.55	16.20	No. 150 05634
Flat Black	56.55	16.20	No. 150 05635
Aluminum	83.40	27.00	No. 150 05636

■ **Tough Prime™**



Rosco offers a unique water-based primer with adhesion properties that allow it to bond to the hard-to-prime scenic materials found in every scene shop. Tough Prime covers just about any surface, including PVC pipe, aluminum, foams and concrete floors, as well as wood and foam core.

	5 Gallons	Gallon	
Tough Prime White	\$231.90	\$51.30	No. 150 06050
Tough Prime Black	231.90	51.30	No. 150 06055

Add 0032 to the product number for Quarts,
0128 for One Gallon and 0640 for Five Gallons.

■ **Fluorescent Paint**

Vivid vinyl acrylic colors are brilliant in normal light and glow brightly when bathed in ultraviolet light. White fluoresces a light blue under black light. Invisible blue appears milky white under normal light but glows blue in ultraviolet.

	Gallon	Quart	Pint	
White	\$110.10	\$36.30	\$24.30	No. 150 05779
Red	110.10	36.30	24.30	No. 150 05780
Orange	110.10	36.30	24.30	No. 150 05781
Yellow	110.10	36.30	24.30	No. 150 05782
Green	110.10	36.30	24.30	No. 150 05783
Blue	110.10	36.30	24.30	No. 150 05784
Invisible Blue	135.30	38.55	25.65	No. 150 05785
Pink	110.10	36.30	24.30	No. 150 05786
Gold	115.65	39.00	25.65	No. 150 05787

■ **Vivid FX™**

The exceptional pigments in Vivid FX glow most brilliantly between 365-380 nanometers. This creates stunning black light effects and intermix cleanly to provide a wide array of intermediate fluorescent hues.

	Gallon	Quart	Pint	
Bright White	\$178.80	\$60.60	\$33.60	No. 150 06250
Lemon Yellow	192.15	67.35	37.65	No. 150 06251
Orange Sunset	178.80	60.60	33.60	No. 150 06252
Orange	178.80	60.60	33.60	No. 150 06253
Scarlet Red	178.80	60.60	33.60	No. 150 06254
Hot Pink	178.80	60.60	33.60	No. 150 06255
Magenta	178.80	60.60	33.60	No. 150 06256
Violet	178.80	60.60	33.60	No. 150 06257
Deep Blue	178.80	60.60	33.60	No. 150 06258
Brilliant Blue	178.80	60.60	33.60	No. 150 06259
Aquamarine	178.80	60.60	33.60	No. 150 06260
Electric Green	178.80	60.60	33.60	No. 150 06261
Deep Green	178.80	60.60	33.60	No. 150 06262

■ **Roscoglo™**

A phosphorescent water-based paint designed for use in total darkness for stage direction and visual orientation.

Ounce	\$ 7.20	No. 150 05666 0001
Pint	80.70	No. 150 05666 0016

■ **Colorine™**

Designed for coloring a wide range of low wattage bulbs used in stagecraft and live entertainment. **\$28.20/pint**

Cardinal Red (26)	No. 150 07601
Ruby Red (27)	No. 150 07602
Magenta (49)	No. 150 07603
Moonlight Blue (80)	No. 150 07604
Urban Blue (82)	No. 150 07605
Emerald Green (90)	No. 150 07607
Golden Amber (41)	No. 150 07610
Canary Yellow (15)	No. 150 07615
Clear	No. 150 07617
Thinner Pint \$22.80	No. 150 07680

Colorine requires special packaging to meet DOT regulations. This product can only be shipped via UPS, with additional fees.

■ **Rosco Fitch Brushes**

Rosco's professional quality scenic fitches, often called lining brushes, are available individually and in two handy kits. All brushes feature seamless ferrules and natural bristles.

Brush No. 155 05610 (add number in parentheses for each size)

¼" Fitch	(0025)	\$ 6.06
½" Fitch	(0050)	7.58
¾" Fitch	(0075)	11.84
1" Fitch	(0100)	16.30
1¼" Fitch	(0125)	21.28
1½" Fitch	(0150)	25.87
2" Fitch	(0200)	32.05
3" Fitch	(0300)	50.84

7 Brush Set \$101.92 No. 155 056107KIT
Includes fitches whose ferrule widths are: ¼", ½", ¾", 1", 1¼", 1½" and 2"

8 Brush Set \$138.23 No. 155 056108KIT
Includes all the brushes in the 7 Brush Kit plus a 3" Fitch Foliage



■ **Premiere Clear**

Water-borne urethane coating suitable for sealing and protecting painted finishes, floors, and high-traffic surfaces.



	Gallon	Quart	
Premiere Clear Flat	\$59.70	\$19.65	No. 150 06830
Premiere Clear Satin	59.70	19.65	No. 150 06820
Premiere Clear Gloss	59.70	19.65	No. 150 06810

■ **CrystalGel™**

Rosco CrystalGel is a non-toxic, water-based material which provides a clear, plastic-like coating on virtually any surface used in modern stagecraft.



CrystalGel Gallon \$58.65
No. 150 07400 0128
CrystalGel 5 Gallon \$263.55
No. 150 07400 0640

■ **Foamcoat™**

Water-based, flame retardant, protective coating for all rigid foams. Foamcoat dries to a super hard durable coating that resists chipping and cracking.



Foamcoat Gallon \$58.65
No. 150 07100 0128
Foamcoat 3½ Gallons \$195.75
No. 150 07100 0448

■ **Flexcoat™**

Flexible, non-toxic, water-based coating for polyurethane and polystyrene foam. It contains no plasticizers, so it will not become brittle with age or exterior exposure.



Flexcoat Gallon \$58.65
No. 150 07120 0128
Flexcoat 5 Gallon \$263.55
No. 150 07120 0640

■ **FlexBond™**

Clear, flexible scenic glue which bonds many porous and non-porous scenic materials. Rosco FlexBond dries to a clear, hard, yet pliable coating that does not suffer from the "tackiness" common in many other flexible glues.



FlexBond Gallon Jug \$40.20
No. 150 07500 0128
FlexBond 5 Gallon Pail \$180.15
No. 150 07500 0640

■ **Rosco Flamex NF/Natural Fiber Flame Retardant**

Should be used on fabrics like cotton, linen, wool, burlap and most other materials made of natural fibers. Premixed for use straight out of the bottle, NF is perfect for treating backdrops, velours, muslin cycloramas and decorative fabric panels.

Flamex NF Gallon \$38.25
No. 150 079NF 0128

■ **Rosco Flamex SF/Synthetic Fiber Flame Retardant**

Effectively treats many synthetic fibers, such as polyesters, nylons, acrylics and rayons, as well as most cotton/synthetic blends. Premixed for use straight out of the bottle.

Flamex SF Gallon \$60.00
No. 150 079SF 0128

■ **Rosco Flamex DF/Delicate Fabrics Flame Retardant**

Use for synthetic weaves, rayon or silk. Premixed for use straight out of the bottle, DF maintains the gentleness and soft hand of fragile fabrics and draperies.

Flamex DF Gallon \$60.00
No.150 079DF 0128

■ **Rosco Flamex PC/Paper and Cardboard Flame Retardant**

Effectively treats papers and un-waxed cardboard materials. Premixed for use straight out of the bottle, PC is perfect for props and set pieces made from flammable paper products.

Flamex PC Gallon \$60.00
No. 150 079PC 0128

■ **Rosco Flamex WD/Raw Wood Penetrating Flame Retardant**

WD is intended for untreated wood, plywood, cellulose board, acoustical board and corrugated paper.

Flamex WD Gallon \$60.00
No. 150 079WD 0128

■ **Rosco Flamex PA/Latex Paint Additive Flame Retardant**

PA can be added to most latex or water based paints in order to create a flame retardant paint film. PA is useful for treating scenic materials that cannot easily be treated by other methods and for supplying the additional protection of a fire retardant paint coating.

Flamex PA 8-oz jar \$14.25
No. 150 079PA 0008
Flamex PA Case of 12 jars \$157.05
No. 150 079PA 1208

Flames Barrier FR Paint ^{NEW!}

Barrier FR is a zero-VOC, water-based, vinyl-acrylic, intumescent paint, that provides a Class A fire retardant rating when properly applied to most common materials used in scenery, props and staging. When subjected to the initial heat and flames of a growing fire, the paint rapidly expands into a dense char to form a barrier that raises the ignition temperature of the substrate, which inhibits the spread of the fire.

Flamex Barrier FR Black - 1 Gallon \$85.00
No. 150 07FRB 0128

Flamex Barrier FR Black - 5 Gallon \$382.50
No. 150 07FRB 0640

Flamex Barrier FR White - 1 Gallon \$85.00
No. 150 07FRW 0128

Flamex Barrier FR White - 5 Gallon \$382.50
No. 150 07FRW 0640

TV Paint™

Specifically formulated for the sensitive contrast requirements of standard television systems, this versatile acrylic paint can be applied to nearly any surface and comes ready to use right out of the bucket.

TV White – A neutral grey that meets the specifications for 60% reflectance (maximum brightness intended for transmission).

Gallon \$47.25
No. 150 05735 0128

TV Black – A rich, matte black that meets the specifications for 3% reflectance (minimum brightness intended for transmission).

Gallon \$47.25
No. 150 05740 0128

Keying Paints

Video Paint Ultimatte™

Designed with the Ultimatte® technical staff to meet the requirements of their keying effects systems.

	Gal	5 Gal
Ultimatte® Blue	\$78.90	\$362.25

No. 150 05720

Ultimatte® Green	118.35	532.05
-------------------------	---------------	---------------

No. 150 05721

Ultimatte® Super Blue	86.25	378.90
------------------------------	--------------	---------------

No. 150 05722

For One Gallon add 0128 to product number.

For Five Gallon, add 0640 to product number.

Chroma Key™

Specifically formulated to provide high luminance values and color saturation for keying effects. The acrylic colors provide high build, one-coat coverage for use on nearly any surface.

	Gal.	5 Gal.
Chroma Key Blue	\$78.90	\$362.25

No. 150 05710

Chroma Key Green	78.90	362.25
-------------------------	--------------	---------------

No. 150 05711

For One Gallon add 0128 to product number.

For Five Gallon add 0640 to product number.

DigiComp™ Materials

DigiComp is Rosco's trade name for paint and cable precisely crafted to allow seamless compositing for film, video and digital use. In the modern compositing or matting process

DigiComp® Paint

DigiComp Blue
One Gallon \$94.05
No. 150 05705 0128
Five Gallon \$423.30
No. 150 05705 0640

DigiComp Green
One Gallon \$123.75
No. 150 05707 0128
Five Gallon \$557.40
No. 150 05707 0640

DigiComp Cable

3/32" (2.4 mm) DigiComp cable
1/16" (1.6 mm) 7x7, coated diameter 3/32" (2.4 mm)
480 lb. (217 kg) rating, 500' (152 m) spool

DigiComp Green Cable \$235.00

No. 850 57075 0938

DigiComp Blue Cable \$235.00

No. 850 57055 0938

3/16" (4.8 mm) DigiComp cable
1/8" (3.2 mm) 7x19, coated diameter 3/16" (4.8 mm)
2000 lb. (917 kg) rating, 500' (152 m) spool

DigiComp Green Cable \$400.00

No. 850 57075 1875

DigiComp Blue Cable \$400.00

No. 850 57055 1875

1/4" (6.4 mm) DigiComp cable
3/16" (4.8 mm) 7x19, coated diameter 1/4" (6.4 mm)
4200 lb. (1905 kg) rating, 500' (152 m) spool

DigiComp Green Cable \$450.00

No. 850 57075 2500

DigiComp Blue Cable \$450.00

No. 850 57055 2500

Cinefoil

Cinefoil is a matte black aluminum material used for masking light leaks and/or eliminating unwanted reflections. It can be quickly molded to form barndoors, flags and other configurations.



Cinefoil 24" x 25' \$33.95

No. 101 01001 2425

Cinefoil 12" x 50' \$33.95

No. 101 01001 1250

Cinefoil 48" x 25' \$80.00

No. 101 01001 4825

Cinefoil is also available in shorter lengths for still photographers, videographers and students. Called Photofoil it offers the same light control properties at an economical price.

Matte Black Photofoil, 12" x 10' \$9.95

No. 101 01001 1210

Matte Black Photofoil, 24" x 10' \$17.95

No. 101 01001 2410

Butterflies and Overheads

A number of Cinegel materials are available to fit the standard butterfly and overhead frames used in motion picture and television production. All materials are supplied edge-finished with binding and grommets on 24" centers and sewn hems, except for No. 3014 Hilite and No. 3029 Silent Frost. The latter two have an ultrasonic welded seam every 48".

Silent Frost	No. 3029
Grid Cloth	No. 3030
Light Grid Cloth	No. 3032
¼ Grid Cloth	No. 3034
Silent Grid Cloth™	No. 3060
Silent Light Grid Cloth™	No. 3062
Silent ¼ Light Grid Cloth™	No. 3064
Hilite	No. 3014
Full Blue Grid Cloth	No. 3071
½ Blue Grid Cloth	No. 3072
Blue Grid Cloth	No. 3073
Full Straw Grid Cloth	No. 3081
½ Straw Grid Cloth	No. 3082
Straw Grid Cloth	No. 3083
Moonlight Grid Cloth	No. 3090

Prices for Butterfly and Overhead materials

(except for No. 3014 Hilite)

6' x 6'	\$150.00	8' x 8'	\$250.00
12' x 12'	\$400.00	20' x 20'	\$850.00

Hilite:

No. 3014

6' x 6'	\$200.00	8' x 8'	\$325.00
12' x 12'	\$475.00	20' x 20'	\$950.00

Acrylic Panels

Acrylic sheets for daylight correction or light intensity reduction. Minimum quantity of 5.

	4'x8'	5'x8'	
Roscolex 85	\$225.00	\$325.00	No. 3761
Roscolex ½ CTO	225.00	325.00	No. 3751
Roscolex N.3	225.00	325.00	No. 3762
Roscolex N.6	225.00	325.00	No. 3763
Roscolex N.9	225.00	325.00	No. 3764

Roscopak™

Roscopak material is light in weight, yet strong and durable. The material can be taped or tacked to virtually any wall, ceiling or panel to turn that area into an efficient reflector. Roscopak measures 4' x 4½' (1.2 x 1.4 m), and is packaged in a handy pocket size pouch.

Roscopak S/G (silver/gold) \$27.40

No. 08509 4854

Reflection Media

Used for surfacing reflector boards or wherever reflected light is required. The product designation generally indicates the quality of the reflection. Rolls are 48" x 25' (122 cm x 7.6 m).

Roscoflex M (mirror) \$169.75

No. 3801

Roscoflex H (hard) \$169.75

No. 3802

Roscoflex S (soft) \$169.75

No. 3803

Roscoflex SS (supersoft) \$169.75

No. 3804

Roscoflex G (gold tinted) \$169.75

No. 3805

Spun Silver \$169.75

No. 3830

RoscoScrim

(perforated silver/black) \$175.00

No. 3809

Featherflex S/G

(silver/gold) \$169.75

No. 3812

Thin Mirror - S (60" x 20') \$54.75

No. 3813

Thin Mirror - G (60" x 20') \$54.75

No. 3814

Cinebounce - White/Black \$169.75

No. 3840

Polarizing Filters

A neutral grey linear polarizing film used in front of lights to reduce the glare caused by smooth surfaces such as glass, water, paper and certain metallic objects. Should be placed at a slight distance from hot lights.

Sheet: 17" x 20" \$ 54.00

No. 07300 1720

Roll: 17" x 10' \$289.00

No. 07300 1710

RoscoVIEW™

RoscoView is a unique two-part window control system for film and television professionals. It consists of wide width polarizing filter installed on windows and a matching camera polarizing filter. Rotating the camera filter results in 100% control of exterior brightness as seen through the window.

P.O.A. See the demo video at

<http://www.rosco.com/us/video/roscoview.cfm>

RoscoShades™

The RoscoShade system allows television professionals to quickly and conveniently balance outdoor and studio light when there is a window in the TV or video picture. Custom filter shades are made to precisely fit the studio windows, so there is no light or glare. You can choose the filtration you need and have it in place in just a few minutes by electronically or manually lowering or retracting the appropriate material.

Details and a demo video at

<http://www.rosco.com/FTVP/rosco Shades.cfm>



Chautauqua Theatre Company (July 2007), "The Just" by Albert Camus
Directed by Ethan McSweeney, Lighting Design by Scott Zielinski

Rosco's projection screens can be used for front or rear projection, digital or analog imaging, close up or long throw installations. Available in 55" or 86" wide rolls or in custom finished sizes.

Colors and recommended uses:

Front White: Bright white surface for front projection use.

Twin White: Suitable for front or rear projection, or as a cyclorama.

Grey: Recommended for rear projection.

Black: Recommended for rear projection and high ambient light situations.

Light Translucent: Virtually clear, suitable for daytime, exterior rear projections or in exceptionally bright ambient light conditions.

■ 55" Seamless Screen

55" (139.7 cm) wide. Minimum order is one linear yard.

	Price/Yard
Grey	\$18.30
No. 500 52105 55	
Twin White	18.30
No. 500 52106 55	
Black	18.30
No. 500 52107 55	
Light Translucent	18.30
No. 500 52108 55	
Front White	18.30
No. 500 52109 55	

■ 86" Seamless Screen

Minimum order is one linear yard.

	Price/Yard
Grey	\$85.00
No. 500 52105 86	
Twin White	85.00
No. 500 52106 86	
Front White	85.00
No. 500 52109 86	

■ Custom Screen

Rosco will fabricate a custom screen to your precise specifications for size, shape, and finishing details. Standard pricing includes grommets on 12" centers, vertical seams, finished edges and a pipe pocket and skirt. Irregular shapes can be made but may require additional set-up charges. Delivery in as little as two weeks. All Rosco screens are flame-retardant and washable. Dimensions to outside edge of screen, rounded up to the foot. Minimum order: 100 square feet.

Finished Screen	55" panels	\$4.95/sq. ft.
	86" panels	5.40/sq. ft.
Unfinished Screen (raw edges)	55" panels	4.50/sq. ft.
	86" panels	4.95/sq. ft.

■ 110" Screen

Double width continuous rolls of two 55" sections welded together. Minimum order is two linear yards.

	Price/Yard
Grey	\$102.75
No. 500 52105 10	
Twin White	102.75
No. 500 52106 10	
Black	102.75
No. 500 52107 10	
Light Translucent	102.75
No. 500 52108 10	
Front White	102.75
No. 500 52109 10	

■ Stretch-N-Hook™

This versatile fastener is constructed of 5/32" (4mm) elastic cord with a sturdy molded hook. Overall length is 12". Minimum order: 12 units.

Stretch-N-Hook	\$3.50/each
No. 500 05100 0010	

■ Transparent Screen Tape

For temporarily seaming screen yardage together for a production, or for temporary repairs of screen material. Taped seams may spread within two months. 48 mm x 50 m.

Transparent Screen Tape	\$6.40
No. 851 05100 4850	

Hinges and Pin Wire

Hinges are generally used as an aid in attaching scenery flats. Three types are available. Loose Pin Hinges with removable pins; Tight Pin Hinges with permanent pins. And the Sure Hinge. The Sure Hinge is a special type of loose pin hinge with interchangeable halves. It is scored so you can bend it around nominal 1" lumber.



Loose Pin Hinge



Tight Pin Hinge



Sure Hinge

1.5" Loose Pin Hinge – Box of 12 hinges \$21.95

No. 850 73100 0001

1.5" Tight Pin Hinges – Box of 12 hinges \$21.95

No. 850 73150 0001

2" Loose Pin Hinge – Box of 12 hinges \$33.95

No. 850 73200 0002

2" Tight Pin Hinge – Box of 12 hinges \$33.95

No. 850 73250 0002

Sure Hinge – Box of 12 hinges \$29.95

No. 850 73300 0000

Pin Wire – One-pound bundle. \$4.35

No. 850 73500 0000

Often used as an alternate pin in hinges and for other stage purposes.

Sure Clamp™

The Sure Clamp has a grip range of 1½" to 2" and is used to hang lighting fixtures or scenery directly to pipes. An extra-secure substitute for the standard C-Clamp, it closes automatically when weight is hung on it and is further secured by a hand knob which requires no tools for adjustment.



Sure Clamp \$48.95

No. 850 78020 0000

Wagon Brakes

Mounted to the side of a platform or scenery, this brake actually lifts the scenery off its casters, preventing the wagon from shifting under active actor movements. A unique lever action pushes down a plunger, lifting even very heavy pieces with only minimal force required from a stagehand. A minimum of two brakes per unit are recommended.



Wagon Brake w/Extension Spindle (5/16" x 21/2")

(300 lb. max.) \$19.95

No. 850 74510 0000

Heavy Duty Wagon Brake (800 lb. max.) \$34.95

No. 850 74550 0000

Heavy Duty Extension Spindle (optional) \$3.75

No. 850 74555 0000

Sandbags

These sandbags, made in the U.S.A., are carefully rated for the weight of sand they will hold. They are made from strong canvas, reinforced with a sling, and equipped with a heavy metal hook and safety catch. Sand is not included.



No. 850 72610 Sandbag (add 4 digits for size)

10 pound sandbag	(0010)	\$30.25
25 pound sandbag	(0025)	33.25
50 pound sandbag	(0050)	43.75
75 pound sandbag	(0075)	57.75
100 pound sandbag	(0100)	62.75
150 pound sandbag	(0150)	65.50
200 pound sandbag	(0200)	77.95

Belay Pins

17" Wood Belay Pin \$12.00

No. 850 71700 0017

Solid hickory wood, with an easy grip handle. 1½" diameter

21" Wood Belay Pin \$13.50

No. 850 71700 0021

Same as above but with 4" longer shaft and 1½" diameter

Stage Screws

Stage screws are used to fasten flats or scenery pieces to the stage floor.



Steel Stage Screw



Stage Plug

They go directly into the wood stage floor. The Steel Stage Screw should be used when the screw must be used in the same place several times, or where exceptional holding power is needed. To use the Steel Stage Screw, drill a ⅝" hole, screw the Stage Plug into the floor with a wide straight blade screwdriver, then fit the screw into the plug.

Stage Screw \$6.95

No. 850 74200 0000

Steel Stage Screw \$6.95

No. 850 74100 0000

⅜" diameter. Heavy steel w/ zinc plating.

Stage Plug \$6.95

No. 850 74150 0000

Used with Steel Stage Screw, but sold separately. For ⅝" hole.



76310
Top Hanger Iron



76410
D-Ring Plate with Ring



76220
Ceiling Plate with Ring



76320
Bottom Hanger Iron

■ Hanging and Attaching Hardware

Ceiling Plate With Ring \$17.85

No. 850 76220 0000

Lines or cable are more easily attached with this device affixed to the ceiling of a box set. May also be used to hang relatively lightweight scenery.

Top Hanger Iron \$6.95

No. 850 76310 0000

Affixed to the top of a scenery flat for hanging.

Bottom Hanger Iron \$8.25

No. 850 76320 0000

Fits under the bottom member of a scenery flat. Usually secured parallel to the Top Hanging Iron.

D-Ring Plate with Ring \$3.75

No. 850 76410 0000

The floor plate bolts to the stage floor and lines may be tied off through the D-ring.

■ Flicker Candles™

A theatrical alternative to flame candles, these units look and act just like the real thing . . . right down to the dripped wax. Most importantly, they are powered electrically, so they don't present potential hazards of using live flames. A simple 9-volt AC Adaptor allows you to raise or lower the dimming level on the Flicker Candles.



Professional Flicker Candle \$72.00

No. 854 09001 0017

17½" long by 1½" in diameter. Comes with 4 foot leads for remote installation to a power source.

Self-Contained \$44.50

No. 854 08903 0009

Complete with a candle tip, a realistic stem with a dripping wax look, an on-off switch, and connection for a 9 volt battery, this 9¾" unit is for productions where the performers need to carry a candle from place to place or where the candle needs to be turned "on" or "off" during the show.

Wired Stem \$35.75

No. 854 08902 0009

The Wired Stem Model is 9¾" and consists of the candle tip, candle stem and 4 foot leads for remote installation to a power source.

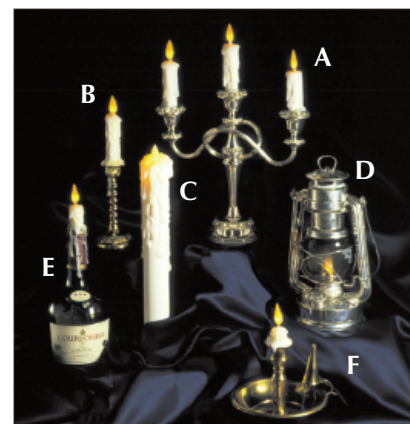
Basic Module \$29.75

No. 854 08901 0004

The Basic Module is a 4" long unit with short pins for wiring to a power source and is ideal for building custom units.

■ Custom Candle Range

Rosco Flicker Candles can be custom built into many popular settings. Here are some examples of the bases and specialty settings available.



A Three Arm Candelabra \$399.00

No. 854 09002 0000

B Single Candlestick \$136.00

No. 854 09004 0000

C Professional Flicker Candle \$72.00

No. 854 09001 0017

D Classic Hurricane Lantern \$138.00

No. 854 09003 0000

E Classic bottle with realistic dripping wax \$89.00

No. 854 09006 0000

F Classic saucer holder \$92.00

No. 854 09005 0000

■ 20-Amp Dual Termination Connectors



Direct wire or lugged connections. All the necessary hardware for either style is included with each connector. Included strain relief inserts allow the connector to grip standard industry cables ranging from 12/3 stage cable to sleeved fixture leads.

20 amp male DTConnectors \$6.75

No. 12120

20 amp female DTConnectors \$6.75

No. 22120

Connector hardware is available in bulk packs for large shops or installation projects. The bulk pack contains hardware sufficient for 100 connectors packed by like type for binning on the assembly bench. Also available are 20-count packages of connectors. These are supplied with a set of hardware conveniently packed with each connector.

To order 20-count packages of male connectors, use Product Code 203 12120 2020; for 20-count packages of female connectors use Product Code 203 22120 2020.

Color Covers

Connectors can be equipped with your choice of colored covers. Only available in 100 count boxes of covers.

Black – 100 count

No. 203 00232 0100

Red – 100 count

No. 203 00332 0100

Green – 100 count

No. 203 00432 0100

Blue – 100 count

No. 203 00532 0100

Yellow – 100 count

No. 203 00632 0100

Clear – 100 count

No. 203 00732 0100



Personalized Connectors

20-amp DTConnectors can be personalized with a company or organization name or logo on the cover. Personalized covers can be supplied with new connector orders or as replacement covers for existing Rosco connectors.

Connector engraving charge \$.20/cover

No. 22000

■ Auxiliary Strain Relief

A supplemental Strain Relief is available for the DT Connector when used with undersized cable. It will accept up to 16/3 Type S cable.

Auxiliary Strain Relief \$1.00

No. 203 80002 2001

■ 60A Connectors

Rosco's 60 amp connectors are available in both panel mount and cable end configurations. UL-listed.

60A Male Plug \$35.75

No. 203 10126 6001

60A Female Receptacle \$40.00

No. 203 20126 6001

■ Adapters

Rosco Adapters are designed to quickly adapt Rosco 20A Connectors to the most common connections found: Twistlock and U-ground. Unibody construction and internally wired at the factory.

20A M Pin to 15A F U-ground \$42.00

No. 203 70005 2001

20A M Pin to 20A F Twistlock \$40.50

No. 203 70003 2001

20A F Pin to 15A M U-ground \$27.75

No. 203 70007 2001

20A F Pin to 20A M Twistlock \$31.75

No. 203 70004 2001

■ Panel Mount Connectors

Made of high heat resistant material, the Rosco Panel Mount Connector conforms to industry standards for compatibility and installation. UL-listed.

20A Male Panel Mount \$9.25

No. 203 50002 2001

60A Female Panel Mount \$27.25

No. 203 60006 6001

20A Female Panel Mount \$7.50

No. 203 60002 2001

60A Male Panel Mount \$25.75

No. 203 50006 6001

■ Wallhugger™

Rosco's Wallhugger is for situations where lighting fixtures equipped with 2 P&G connectors need to be powered from 15-amp wall receptacles. Includes an indicator lamp which illuminates when power is available to the device.

Wallhugger \$29.50

No. 203 70008 2001





■ **Gaffers Tape**

A premium quality cotton substrate, coated with heavy-duty vinyl.

Rubber based adhesive has high tack with excellent adhesion but will not leave a sticky residue.

Rolls measure 48mm x 50m (1.9" x 54.6 yds.)

Black	\$19.00	No. 851 42221 4850
Grey	19.00	No. 851 42223 4850
Red	19.00	No. 851 42339 4850
Yellow	19.00	No. 851 42342 4850
Blue	19.00	No. 851 42340 4850
Electric Blue	20.10	No. 851 42338 4850
Fluorescent Green	20.10	No. 851 42346 4850
White	19.00	No. 851 42222 4850

■ **Spike Tape**

12mm cloth tape for marking location of actors and scenery on stage floors. 25m roll.

Red	\$4.40	No. 851 05210 1225
Yellow	4.40	No. 851 05220 1225
Blue	4.40	No. 851 05230 1225
Green	4.40	No. 851 05240 1225
White	4.40	No. 851 05250 1225

■ **Glow Tape**

Glow-in-the-dark tape ideal for marking low light areas. It glows to a yellow-green color that can remain illuminated for hours. 24mm wide.

5m roll (16.35 ft.)	\$12.10	No. 851 05000 2405
10m roll (32.7 ft.)	\$23.10	No. 851 05000 2410
30m roll	\$69.30	No. 851 05000 2430

■ **Caution Tape**

48mm vinyl tape has alternating bands of bright yellow and black. It is perfect for marking backstage areas that are off-limits or dangerous. 16.5m roll.

Black/Yellow	\$7.50	No. 851 02288 4816
---------------------	---------------	--------------------

■ Slit Drape

This Rosco version of slash curtain consists of overlapping 1/8" strips of durable, flame retardant vinyl, 36" wide (91.44 cm). Add 4-digit number in parentheses to product number to indicate length desired.



Solid Black	8'	(0008)	\$12.50	No. 350 02610
	16'	(0016)	26.50	
	24'	(0024)	53.00	
Solid Silver	8'	(0008)	12.50	No. 350 02609
	16'	(0016)	26.50	
	24'	(0024)	53.00	
Solid Gold	8'	(0008)	12.50	No. 350 02625
	16'	(0016)	26.50	
	24'	(0024)	53.00	
Black/Silver	8'	(0008)	14.95	No. 350 02608
	16'	(0016)	32.50	
	24'	(0024)	68.75	
Black/Gold	8'	(0008)	14.95	No. 350 02602
	16'	(0016)	32.50	
	24'	(0024)	68.75	
Black/Diffraction	8'	(0008)	14.95	No. 350 02600
	16'	(0016)	32.50	
	24'	(0024)	68.75	
White/Diffraction	8'	(0008)	14.95	No. 350 02606
	16'	(0016)	32.50	
	24'	(0024)	68.75	
Silver/Diffraction	8'	(0008)	14.95	No. 350 02601
	16'	(0016)	32.50	
	24'	(0024)	68.75	
Iridescent	8'	(0008)	14.95	No. 350 02630
	16'	(0016)	32.50	
	24'	(0024)	68.75	
Silver/Iridescent/Gold	8'	(0008)	14.95	No. 350 02634
	16'	(0016)	32.50	
	24'	(0024)	68.75	
Silver/Gold/Diffraction	8'	(0008)	14.95	No. 350 02636
	16'	(0016)	32.50	
	24'	(0024)	68.75	

■ Showcloth™

A weave of thread and self extinguishing plastic strips produces an elegant, shimmering fabric with a soft hand and beautiful drape. Showcloth has a selvedge edge for easy sewing.

Roll 47" x 30 ft. \$ 150.00
Bolt 47" x 330 ft. \$1,650.00

White/Gold	No. 352 62101
Black/Gold	No. 352 62102
White/Silver	No. 352 62103
White/Iridescent	No. 352 62104
Black/Silver	No. 352 62105
Black/Black	No. 352 62106
Black/Iridescent	No. 352 62107

Add 4730 to product number for 30 ft. roll.
 Add 4701 to product number for 330 ft. bolt.

■ Glamé™

Glamé is woven from a durable, lightweight, self-extinguishing plastic film



48" x 30 ft. roll. 330 ft. bolts also available.

Silver	\$ 89.25	No. 353 52006
Gold	89.25	No. 353 52009
Silver/Black	89.25	No. 353 52012
Gold/Black	89.25	No. 353 52013
Gold/Silver	89.25	No. 353 52014
Silver/Diffraction	99.00	No. 353 52032
Gold/Diffraction	99.00	No. 353 52033
Clear/Diffraction	99.00	No. 353 52034
Iridescent/Diffraction	99.00	No. 353 52035
Razzle Dazzle	118.00	No. 353 52041
Black	89.25	No. 353 52045
Black/Iridescent	99.00	No. 353 52052
Silver/Iridescent	119.00	No. 353 52053
Gold/Iridescent	119.00	No. 353 52054

Add 4830 to product number for 30 ft. roll.
 Add 4801 to product number for 330 ft. bolt.

■ Shimmer Scrim™

Shimmer Scrim is a combination of thread and plastic film woven into a theatrical fabric. This self-extinguishing fabric may be used for traditional scrim effects or as a shimmering, airy drape. It has a selvedge edge for easy sewing.

Roll (47" x 30 ft.) \$ 150.00
Bolt (47" x 330 ft.) 1,430.00

White/Iridescent/Gold	No. 351 41001
White/Clear/Iridescent	No. 351 41005
White/Iridescent/White	No. 351 41011
Black/Clear/Silver	No. 351 42001
Black/Clear/Iridescent	No. 351 42005
Black/Clear/Black	No. 351 42011
Black/Gold/Clear	No. 351 42021

Add 4730 to product number for 30 ft. roll.
 Add 4701 to product number for 330 ft. bolt.

■ Glitter

RoscoGlitter, in 1/4" hexagonal chips, is uniquely suited for production applications. The chips are brilliant under stage lights and can be sprinkled on or mixed directly into Clear Gloss or Flat Acrylic for easy application. Small is 4 oz., large is 16 oz. except where noted.

	Small / Large	
Silver	\$8.00 / 25.00	No. 360 02890
Gold	10.10 / 34.00	No. 360 02891
Red	10.10 / 34.00	No. 360 02893
Sky Blue	10.10 / 34.00	No. 360 02894
Royal Blue	10.10 / 34.00	No. 360 02895
Green	10.10 / 34.00	No. 360 02897
Fuchsia	10.10 / 34.00	No. 360 02898
Pink Fizz	10.10 / 34.00	No. 360 02902
Blue/Green Iridescent	10.10 / 34.00	No. 360 02904*

*Note: small is 3 oz. and large is 12 oz.
 Add 0004 to number for small; add 0016 for large.

Breakaways

Plastic breakaways shatter realistically and are specially packaged to assure that they are delivered intact. Bottles are shipped with labels unattached for easy customization. Minimum order: 6 breakaways. (Bottles must be the same color.)



	1/2 dozen		
Beer Bottle - Amber	\$117.00	No. 852 80011 0000	
Beer Bottle - Green	117.00	No. 852 80012 0000	
Whiskey Bottle - Amber	130.00	No. 852 80031 0000	
Whiskey Bottle - Green	130.00	No. 852 80032 0000	
Wine Bottle - Amber	130.00	No. 852 80051 0000	
Wine Bottle - Green	130.00	No. 852 80052 0000	

Mirrors

A variety of reflective surfaces in a metalized plastic format.

Flexible Silver (48" x 30')	\$69.50	No. 359 03906 4830
Thin Silver (60" x 30')	40.75	No. 359 03925 6030
Thin Gold (60" x 30')	40.75	No. 359 03927 6030
Rigid Gold (51" x 30')	93.25	No. 359 03930 5130
Rigid Silver (51" x 30')	93.25	No. 359 03931 5130

Shrink Mirror™

Rosco's Silver Shrink Mirror is a lightweight substitute for heavy glass mirror. This metalized plastic laminate is designed to be mounted to a frame and heat shrunk for superior reflectance. 54" x 30'



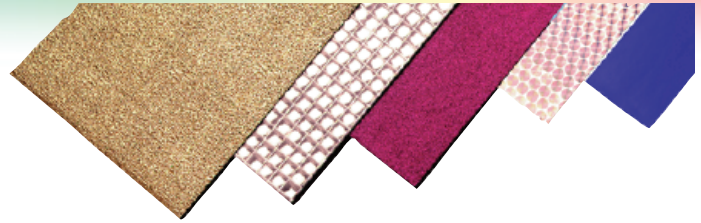
Silver Shrink Mirror	\$136.75	No. 359 03909 5430
-----------------------------	-----------------	--------------------

Smooths™

The smooth colors are pressure-sensitive for easy mounting.

24" x 30' rolls (61 cm x 9.2 m).

Bright Orange	\$32.50	No. 355 03974 2430
Gun Metal Grey	32.50	No. 355 03975 2430
Cherry Red	32.50	No. 355 03976 2430
Royal Blue	32.50	No. 355 03980 2430
Silver	32.50	No. 355 03981 2430
Pink Fizz	32.50	No. 355 03983 2430
Light Gold	32.50	No. 355 03985 2430
Smooth Iridescent	86.40	No. 355 03986 2430



Metalix™

This durable metalized plastic material is available in a variety of colors and surfaces.

Metalix 48" x 30' roll	\$89.60
-------------------------------	----------------

Silver Pebble	No. 356 03902 4830
Soft Silver	No. 356 03971 4830
Gold Pebble	No. 356 03972 4830

Multi-Lens™

A laser etched plastic film with the 3-D look of glass lenses. Pressure sensitive for easy mounting.

Multi-Lens 24" x 15' rolls	\$49.50
-----------------------------------	----------------

½" Silver	No. 357 04910 2415
½" Gold	No. 357 04915 2415
2" Silver	No. 357 04920 2415
2" Gold	No. 357 04925 2415

Diffractions™

Five laser etched plastic films for prismatic effects. All the diffractions are adhesive backed.

Diffractions 24" x 15' rolls	\$46.50
-------------------------------------	----------------

Exotic Circles	No. 358 02956 2415
Exotic Hex	No. 358 02957 2415
¼" Mosaic	No. 358 02960 2415
Horizontal Stripes	No. 358 02962 2415

Sparklene™

Eleven glitter laminate plastic film colors.. Sparklene is pressure sensitive for easy mounting.

Sparklene 24" x 15' rolls (61 cm x 4.6 m).	\$49.50
---	----------------

Silver	No. 354 03990 2415
Blue	No. 354 03991 2415
Red	No. 354 03992 2415
Green	No. 354 03993 2415
Fuchsia	No. 354 03994 2415
Gold	No. 354 03995 2415
Fluorescent Pink	No. 354 03961 2415
Blue/Green Iridescent	No. 354 03964 2415



www.rosco.com

52 Harbor View Avenue, Stamford, CT 06902
(203)708-8900 • 1(800)ROSCO NY • Fax: (203)708-8919

9420 Chivers Avenue, Sun Valley, CA 91352
(818)543-6700 • 1(800)ROSCO LA • Fax: (818)662-9470

Also in: Toronto, London, Madrid, São Paulo and Sydney

CAT50.12.2012

Distributor:



Phone: 407-857-8770
Fax: 407-857-8771
Email: sales@techni-lux.com